

Dear RadQual Customer,

- We're pleased that you're a RadQual customer and we genuinely appreciate your business.
- **Returns are only accepted at 4137 Commerce Circle, Idaho Falls, ID 83401** in accordance our contract manufacturers.
- This Return Forms & Labels Package provides everything you'll need to easily and legally return UN2915 and UN2910 spent sources for disposal.
- Be sure to read instructions carefully as you complete these forms.

How to determine if your package is shipped as a UN2910 Package or a UN2915 Package:

Conduct a radiation dose rate survey on each surface of all 6 sides of your package. Measurements are based on nuclides not exceeding limited specified under 49 CFR 173.425.

- If your surface reading is greater than .5 mrem/hr, but less than 50 mrem/hr, you must ship your package as a **UN2915**.
- If your surface reading is less than .5 mrem/hr, you can ship your package as a **UN2910**.
- If your surface reading is greater than 50 mrem/hr, contact your Radiation Safety Officer [RSO].

Forms and labels referenced in this package:

Section 1: Emergency Response Information

- Form a: Example of Emergency Response Information Guide 163
Download a readable/printable guide "[EMERGENCY RESPONSE INFORMATION](#)"

Section 2: UN2915 – Package Return Information

- Form b: Shipper's Declaration for Dangerous Goods Templates
To ship, ALL declarations *must* have a **red candy striped border**.
Click the link below to download & print a Fedex declaration form with the candy striped border. You'll need a color printer:
<http://www.fedex.com/us/services/pdf/ShippersDecNoColumnsColorPrinter.pdf>
Do you have pre-printed candy striped paper?
Click the link below to download & print a Fedex declaration form with NO candy striped border:
<http://www.fedex.com/us/services/pdf/ShippersDecNoColumnsBWPrint>

- Label c: Example of a DOT Type A Box Marking Return Label
Label d: Printable Cargo Aircraft Only Label
Label e: Printable Return Mailing Label

Section 3: UN2910 – Excepted Package Return Information

- Label f: Printable Excepted Package Label
Label g: Printable Return Mailing Label

Need further assistance?:

- Most of these forms and labels are available at www.radqual.com/returns.
- Unable to access our website? Please call 603.513.1221 for customer assistance between 9:00 am and 5:00 pm EST.
- Please note that returns are only accepted at 4137 Commerce Circle, Idaho Falls, ID 83401 in accordance our contract manufacturers.

What the numbers mean:

UN2915
Package
Sources with low radiation levels – 50 mrem / hr (0.43 mSv / hr) maximum on surface; 1 mrem / hr (8.7 μSv / hr) maximum at 1 meter.

UN2910
Excepted Package
Instruments and manufactured articles such as clocks, electronic tubes, or apparatus having radioactive material as a component part.



Proper training is required under international, federal and/or state regulations to offer for shipment or transport dangerous goods and/or hazardous materials.

All persons and entities must comply with all federal regulations, including but not limited to the specific training requirements of 49 CFR § 172.700 - 172.704.

IF YOU HAVE NOT BEEN TRAINED, CONTACT YOUR RADIATION SAFETY OFFICER.

RadQual and their contract manufacturer provide these materials as a service to be used as guidelines to assist properly trained shippers. The materials provided by RadQual and their contract manufacturers in no way alters or satisfies any federal training requirements. The attached information provided does not meet the training requirements as required by DOT 49 CFR.

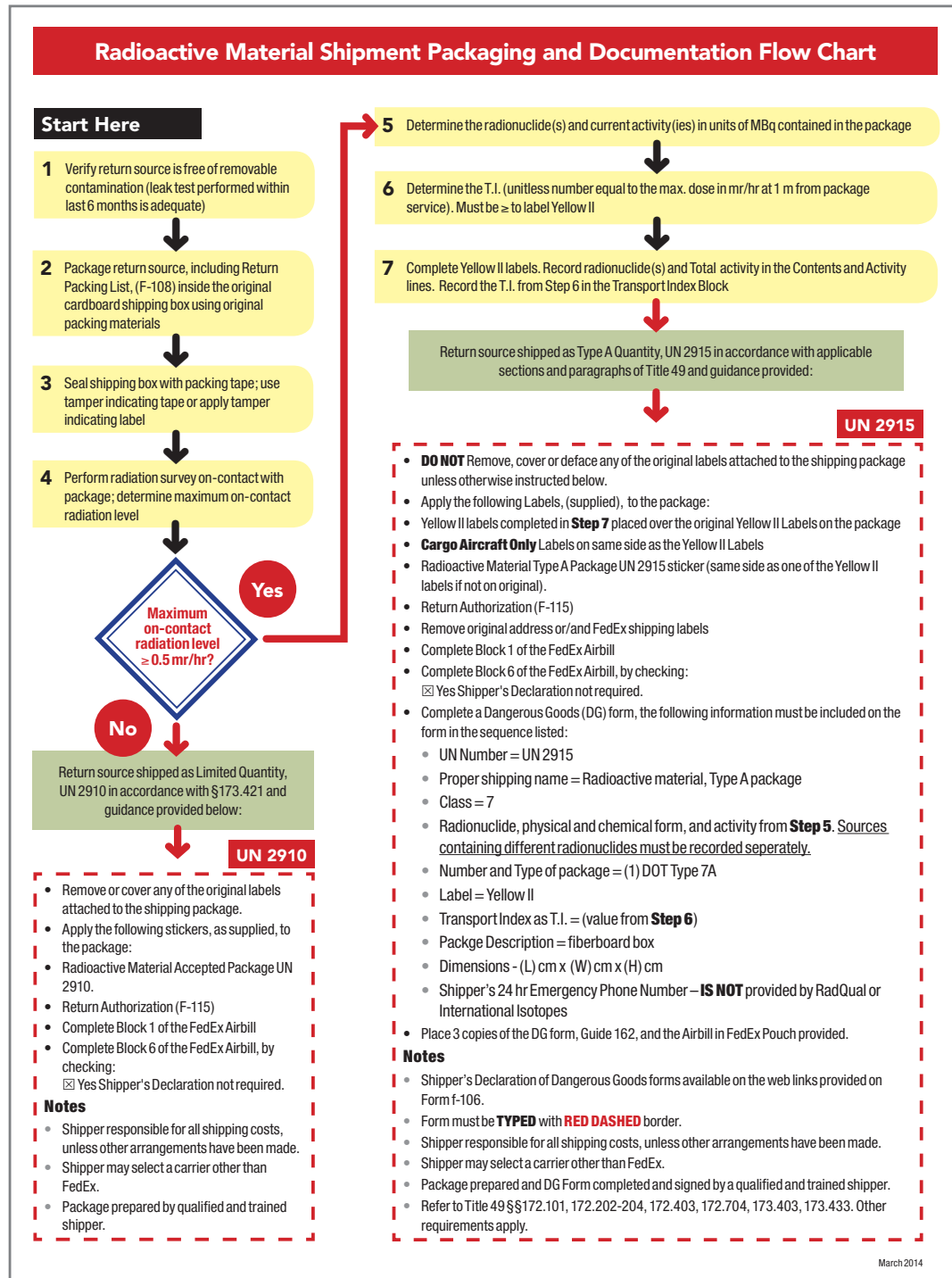
The study and/or use of these materials do not qualify an individual to prepare, package, transport or otherwise handle dangerous goods or hazardous materials.

The information provided with this document is subject to change or update due to changing government regulations. The user(s) of this document assumes responsibility for complying with all applicable laws and regulations regarding the shipment of Dangerous Goods.

RadQual or their contract manufacturer shall not be held responsible for any loss, injury and/or damage caused by errors, omissions, misprints or misrepresentations of the contents of these documents for any unauthorized or inappropriate use.

Radioactive Material Shipment Packaging and Documentation Flow Chart

Download this form at www.radqual.com/returns/flowchart





POTENTIAL HAZARDS

HEALTH

- Radiation presents minimal risk to transport workers, emergency response personnel, and the public during transportation accidents. Packaging durability increases as potential hazard of radioactive content increases.
- Undamaged packages are safe. Contents of damaged packages may cause higher external radiation exposure or both external and internal radiation exposure if contents are released.
- Type A packages (cartons, boxes, drums, articles, etc.) identified as "Type A" by marking on packages or by shipping papers contain non-life endangering amounts. Partial releases might be expected if "Type A" packages are damaged in moderately severe accidents.
- Type B packages, and rarely occurring Type C packages (large and small, usually metal) contain the most hazardous amounts. They can be identified by package markings or by shipping papers. Life threatening conditions may exist only if contents are released or package shielding fails. Because of design, evaluation, and testing of packages, these conditions would be expected only for accidents of utmost severity.
- The rarely occurring "Special Arrangement" shipments may be of Type A, Type B, or Type C packages. Package type will be marked on packages, and shipment details will be on shipping papers.
- Radioactive White-I labels indicate radiation levels outside single, isolated, undamaged packages are very low [less than 0.005 mSv/h (0.5 mRem/h)].
- Radioactive Yellow-II and Yellow-III labeled packages have higher radiation levels. The transport index (TI) on the label identifies the maximum radiation level in mRem/h one meter from a single, isolated, undamaged package.
- Some radioactive materials cannot be detected by commonly available instruments.
- Water from cargo fire may cause pollution.

FIRE OR EXPLOSION

- Some of these materials may burn, but most do not ignite readily. Radioactivity does not change flammability or other properties of materials.
- Type B packages are designed and evaluated to withstand total engulfment in flames at temperatures of 800° C (1475° F) for a period of 30 minutes.

PUBLIC SAFETY

- In case of EMERGENCY, call Chemtrec at 1(800)424-9300. For International EMERGENCIES, Chemtrec can be reached at +1(703)527-3887. The International Isotopes, Inc. Chemtrec account number is 11472.
- Priorities for rescue, life-saving, first aid, fire control, and other hazards are higher than the priority for measuring radiation levels.
- Radiation Authority must be notified of accident conditions. Radiation Authority is usually responsible for decisions about radiological consequences and closure for emergencies.
- As an immediate precautionary measure, isolate spill or leak area for at least 25 meters (75 feet) in all directions.
 - Stay upwind, uphill, and/or upstream.
 - Keep unauthorized personnel away.
- Detain or isolate uninjured persons or equipment suspected to be contaminated; delay decontamination and cleanup until instructions are received from Radiation Authority.

PROTECTIVE CLOTHING

- Positive pressure self-contained breathing apparatus (SCBA) and structural firefighters' protective clothing will provide adequate protection against internal radiation exposure, but not external radiation exposure.

EVACUATION

- **Large Spill**
 - Consider initial downwind evacuation for at least 100 meters (330 feet).
- **Fire**
 - When a large quantity of this material is involved in a major fire, consider an initial evacuation distance of 300 meters (1000 feet) in all directions.

EMERGENCY RESPONSE

- **Fire**
 - Presence of radioactive material will not influence the fire control processes and should not influence selection of techniques.
 - Move containers from fire area if you can do it without risk.
 - Do not move damaged packages; move undamaged packages out of fire zone.
- **Small Fire**
 - Dry chemical, CO₂, water spray, or regular foam.
- **Large Fire**
 - Water spray, fog (flooding amounts)
 - Dike fire-control water for later disposal
- **Spill or Leak**
 - Do not touch damaged packages or spilled material.
 - Damp surfaces on undamaged or slightly damaged packages are seldom an indication of packaging failure. Most packaging for liquid content has inner containers and/or inner absorbent materials.
 - Cover liquid spill with sand, earth, or other noncombustible absorbent material.

FIRST AID

- Ensure that medical personnel are aware of the material(s) involved and take precautions.
- Call 911 or emergency medical service.
- Medical problems take priority over radiological concerns.
- Use first aid treatment according to the nature of the injury.
- Do not delay care and transport of a seriously injured person.
- Give artificial respiration if victim is not breathing.
- Administer oxygen if breathing is difficult.
- In case of contact with substance, immediately flush skin or eyes with running water for at least 20 minutes.
- Injured persons contaminated by contact with released material are not a serious hazard to health care personnel, equipment, or facilities.

Section 2: UN2915

Example of Shipper's Declaration for Dangerous Goods Form

This FedEx form, with the candy striped border, is required for shipments of hazardous materials. It is designed to meet DOT specifications and may be used domestically as well as internationally.

Click the link below to download & print a Fedex declaration form if you have a color printer:

<http://www.fedex.com/us/services/pdf/ShippersDecNoColumnsColorPrinter.pdf>

RadQual can also provide this form with your order upon request.

SHIPPER'S DECLARATION FOR DANGEROUS GOODS		(Provide at least three copies to the airline.)	
Shipper Your Name Here		Air Waybill No. Page of Pages Shipper's Reference Number Your Reference	
Consignee International Isotopes, Inc. 4137 Commerce Circle Idaho Falls, ID 83401			
<i>Two completed and signed copies of this Declaration must be handed to the operator</i>		WARNING Failure to comply with all respects with the applicable Dangerous Goods Regulations may be in breach of the applicable law, subject to legal penalties.	
TRANSPORT DETAILS This shipment is within the limitations prescribed for: <i>(delete non applicable)</i>		Failure to comply with all respects with the applicable Dangerous Goods Regulations may be in breach of the applicable law, subject to legal penalties.	
<input checked="" type="checkbox"/> PASSENGER AIRCRAFT <input checked="" type="checkbox"/> CARGO AIRCRAFT ONLY	Airport of Departure	Shipment type: <i>(delete non applicable)</i> <input checked="" type="checkbox"/> RADIOACTIVE	
Airport of Destination:			
NATURE AND QUANTITY OF DANGEROUS GOODS <i>UN Number or Identification Number, proper shipping name, Class or Division (subsidiary risk), packing group (if required), and all other required information.</i>			
UN2915, Radioactive Material, Type A Package, Class 7 Co-57 Resin Solid, One Type A Package x (value here) MBq II Yellow TI = (insert value here) Dimensions L= cm x W= cm x H= cm (insert dimensions)			
Additional Handling Information This shipment contains radioactive material intended for use in or incident to medical research, diagnosis or treatment.			
I hereby declare that the contents of this consignment are fully and accurately described above by the proper shipping name, and are classified, packaged, marked and labelled/placarded, and are in all respects in proper condition for transport according to applicable International and National Governmental Regulations. I declare that all of the applicable air transport requirements have been met.		Name/Title of Signatory Shipper Name and Title Place and Date Insert Location and Date Signature (A typed signature may be used if the origin and destination are in the United States or its territories.) Signature Required	
EMG Contact		Emergency Telephone Number	
<small>FOR RADIOACTIVE MATERIAL SHIPMENT ACCEPTABLE FOR PASSENGER AIRCRAFT, THE SHIPMENT CONTAINS RADIOACTIVE MATERIAL INTENDED FOR USE IN OR INCIDENT TO RESEARCH, MEDICAL DIAGNOSIS, OR TREATMENT. ADR EUROPEAN TRANSPORT STATEMENT: CARRIAGE IN ACCORDANCE WITH 1.1.4.2.1</small>			

Section 2: UN2915

Pre-printed UN Class 7 Yellow II Label

These are required by 49 CFR 172.500 for highway, rail and water shipments of hazardous materials. They are designed to meet DOT specifications for color and size, and may be used domestically as well as internationally.

Affix the label on a vertical side of the box (not on the top or bottom) oriented as shown

Call RadQual will provide these return labels with your order upon request.



Section **2** | UN2915

Cargo Aircraft Only label

This label should print with the correct dimensions for a 'Cargo Aircraft Only' label. When printed, the minimum dimension should be no smaller than 120 x 100 mm or 4.72" x 3.93". Cut on the dashed line for best results.

Affix the label on a vertical side of the box (not on the top or bottom) oriented as shown. Many printer inks will run when wet, so be sure to cover the label completely with clear plastic tape after you've applied it to the package.

RadQual will provide these labels with your order upon request or simply print this page and use the label below. We suggest that you completely cover the label with clear packing tape to protect it from tearing.



Section 2 | UN2915


Return Mailing Label

Cut on the dashed line for best results.

Affix the label on a vertical side of the box (not on the top or bottom) oriented as shown. Many printer inks will run when wet, so be sure to cover the label completely with clear plastic tape after you've applied it to the package. 4 x 3.5

RadQual will provide these return labels with your order upon request or simply print this page and use the label below. We suggest that you completely cover the label with clear packing tape to protect it from tearing.

RA#:



International Isotopes, Inc.
4137 COMMERCE CIRCLE,
IDAHO FALLS, ID 83401

International Isotopes, Inc.
4137 COMMERCE CIRCLE,
IDAHO FALLS, ID 83401



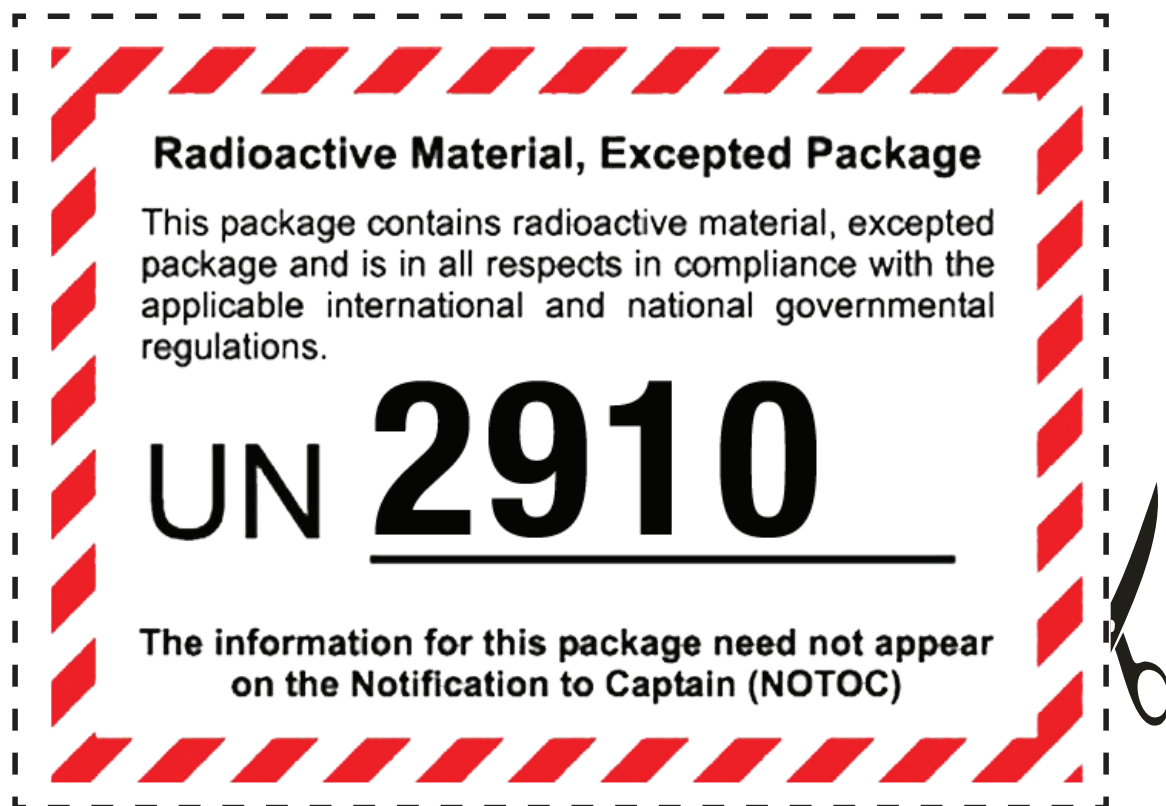
Section 3 | **UN2910 - Excepted Package Return Information**

Excepted Package Label

Cut on the dashed line for best results.

Affix the label on a vertical side of the box (not on the top or bottom) oriented as shown. Many printer inks will run when wet, so be sure to cover the label completely with clear plastic tape after you've applied it to the package.

RadQual will provide these labels with your order upon request or simply print this page and use the label below. We suggest that you completely cover the label with clear packing tape to protect it from tearing.



Section 3 | UN2910

Return Mailing Label

Cut on the dashed line for best results.

Affix the label on a vertical side of the box (not on the top or bottom) oriented as shown. Many printer inks will run when wet, so be sure to cover the label completely with clear plastic tape after you've applied it to the package.

The RA# is your order number.

RadQual will provide these return labels with your order upon request or simply print this page and use the label below. We suggest that you completely cover the label with clear packing tape to protect it from tearing.

RA#:



International Isotopes, Inc.
4137 COMMERCE CIRCLE,
IDAHO FALLS, ID 83401

International Isotopes, Inc.
4137 COMMERCE CIRCLE,
IDAHO FALLS, ID 83401

