

Product Return

Packaging & Labeling Resource Guide

Questions or Assistance

We are here to help. Call us at 208.524.5300
M-Th 7:00 am to 4:00 pm MST

Additional Resources

Visit radqual.com

What's Inside

Source Return Policy.....	4
STOP: Hazardous Materials Training Warning.....	5
How to determine if your package is shipped as a UN2910 Package or a UN2925 Package.....	6
Radioactive Material Shipment Packaging and Documentation Flow Chart.....	7
FedEx Airbill Form	8
FedEx Declaration for Dangerous Goods Form.....	9
Emergency Response Information (Low to High Level Radiation).....	10

Source Return Policy

1. Unlike our competitors, we understand that orders may be made in error. If this does happen, you will receive a prompt credit provided you return the source back to us within 10 working days, less a modest restocking fee to cover wipe testing and restocking costs.

You will be responsible for all shipping expenses associated with the return.

2. If this is our order error or the source appears to be defective, you **MUST** return the source within 10 working days to receive full credit. RadQual will cover all related shipping costs.



Proper training is required under federal and/or state regulations to offer for shipment or transport dangerous goods and/or hazardous materials. All persons and entities must comply with all federal regulations, including but not limited to the specific training requirements of 49 CFR § 172.700 - 172.704.

**IF YOU HAVE NOT BEEN TRAINED
CONTACT YOUR
RADIATION SAFETY OFFICER**

RadQual and their contract manufacturer provide these materials as a service, to be used as guidelines to assist properly trained shippers. The materials provided by RadQual and their contract manufacturer in no way alters or satisfies any federal training requirements. The attached information provided does not meet the training requirements as required by DOT 49 CFR.

The study and/or use of these materials do not qualify an individual to prepare, package, transport or otherwise handle dangerous goods or hazardous materials.

The information provided with this document is subject to change or update due to changing government regulations. The user(s) of this document assumes responsibility for complying with all applicable laws and regulations regarding the shipment of Dangerous Goods.

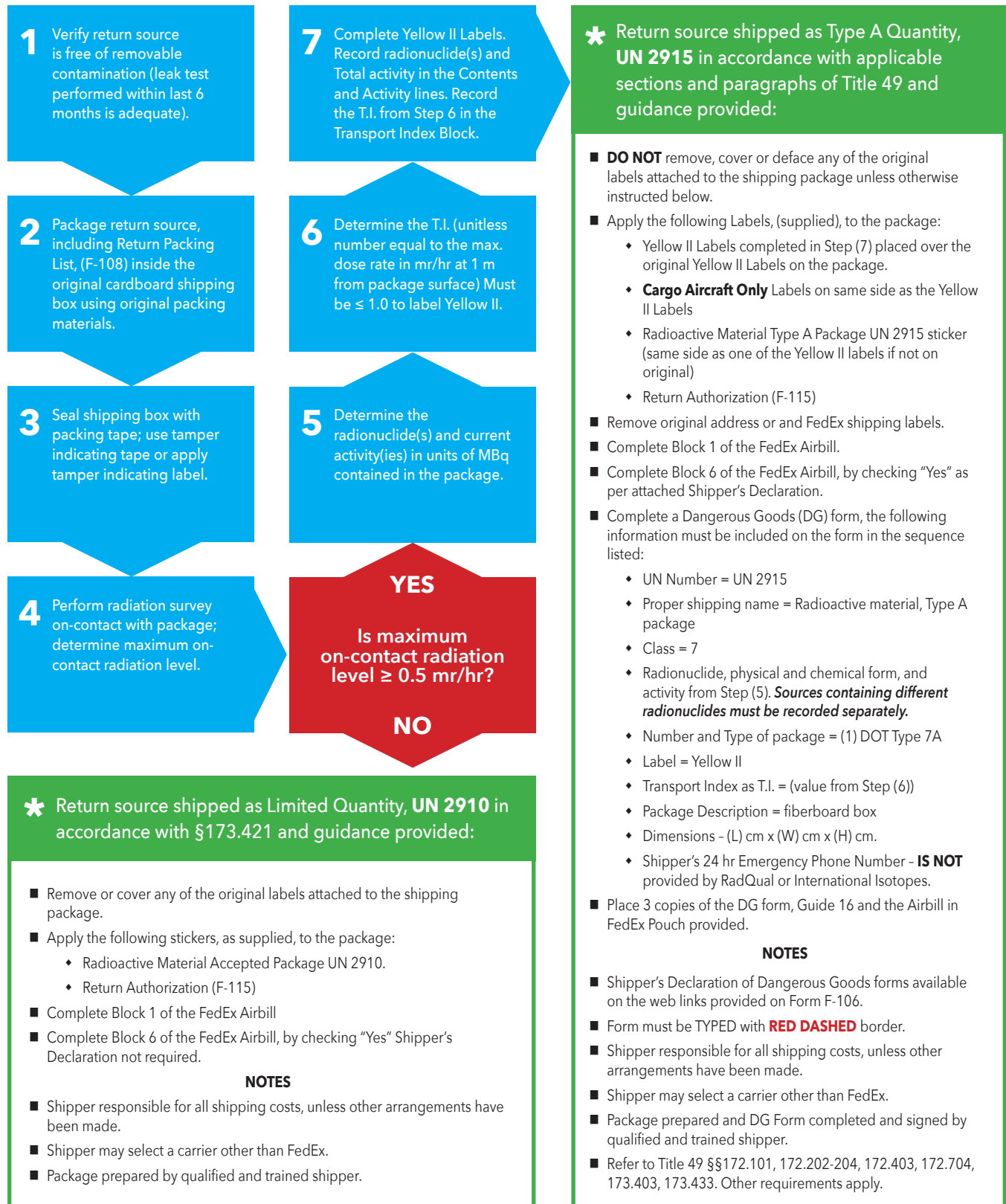
RadQual or their contract manufacturer shall not be held responsible for any loss, injury and/or damage caused by errors, omissions, misprints or misrepresentations of the contents of these documents or for any unauthorized or inappropriate use.

How to determine if your package is shipped as a UN2910 Package or a UN2915 Package:

Conduct a radiation dose rate survey on each surface of all 6 sides of your package. Measurements are based on nuclides not exceeding limited specified under 49 CFR 173.425.

- If your surface reading is greater than .5 mrem/hr, but less than 50 mrem/hr, you must ship your package as a **UN2915**.
- If your surface reading is less than .5 mrem/hr, you can ship your package as a **UN2910**.
- If your surface reading is greater than 50 mrem/hr, contact your Radiation Safety Officer [RSO].

Radioactive Material Shipment Packaging and Documentation Flow Chart



FedEx Airbill Form

Instructions for filling out FedEx Airbill when returning sources. (NOTE: For each step see corresponding numbers in picture below):

1. In the **From** section, fill in your company's information.
2. You are **NOT** required to fill in your company's Internal Billing Reference.
3. In the **To** section, fill in the information for International Isotopes, Inc.
4. In the **Express Package Service** section, select the "FedEx Express Save" option.
5. In the **Packaging** section, select the "Other" option.
6. You are **NOT** required to complete this section.
7. In the **Payment** section, select the "Sender" option.

FedEx Express Package US Airbill Tracking Number: 8171 2600 5881 Form ID No: 0200 Sender's Copy

1 From Please print and press hard.
Date: _____ Sender's FedEx Account Number: _____
Sender's Name: _____ Phone () _____
Company: _____
Address: _____ Dept./Floor/Suite/Room: _____
City: _____ State: _____ ZIP: _____

2 Your Internal Billing Reference
First 36 characters will appear on invoice. OPTIONAL

3 To Recipient's Name: _____ Phone () _____
Company: _____
Address: _____ Dept./Floor/Suite/Room: _____
Address: _____
City: _____ State: _____ ZIP: _____

4 Express Package Service *To most locations.
Next Business Day: ☐ FedEx First Overnight, ☐ FedEx Priority Overnight, ☐ FedEx Standard Overnight.
2 or 3 Business Days: ☐ FedEx 2Day A.M., ☐ FedEx 2Day, ☒ **FedEx Express Saver**.
Packages up to 150 lbs. For packages over 150 lbs., see the FedEx Express Freight US Airbill.

5 Packaging *Declared value limit \$500.
☐ FedEx Envelope*, ☐ FedEx Pak*, ☐ FedEx Box, ☒ **Other**.

6 Special Handling and Delivery Signature Options Fees may apply. See the FedEx Service Guide.
Saturday Delivery: ☐ No Signature Required, ☐ Direct Signature, ☐ Indirect Signature.
Does this shipment contain dangerous goods? ☐ No, ☐ Yes (see attached Shipper's Declaration), ☐ Yes (Shipper's Declaration not required).
Restrictions apply for dangerous goods—see the current FedEx Service Guide.

7 Payment Bill to: ☒ Sender, ☐ Recipient, ☐ Third Party.
FedEx Account No.: _____
Total Packages: _____ Total Weight: _____ Total Declared Value¹: _____

SHIP IT **Ship it. Track it. Pay for it. All online.** Go to fedex.com.

¹Your liability is limited to USD\$100 unless you declare a higher value. See back for details. By using this airbill you agree to the service conditions on the back of this airbill and in the current FedEx Service Guide, including terms that limit our liability.
Rev. Date 2011 • Part #FE000 • ©2012-2011 FedEx • PRINTED IN U.S.A. 644

FedEx Declaration of Dangerous Goods Form

9
PAGE

This FedEx form, with the candy striped border, is required for shipments of hazardous materials. It is designed to meet DOT specifications and may be used domestically as well as internationally.

Go to the link below to download & print a FedEx declaration form if you have a color printer:

<http://www.fedex.com/us/services/pdf/ShipperDecNoColumnsColorPrinter.pdf>

RadQual can also provide this form with your order upon request.

SHIPPER'S DECLARATION FOR DANGEROUS GOODS		(Provide at least three copies to the airline.)			
Shipper Your Name Here		Air Waybill No. Page of Pages Shipper's Reference Number Your Reference			
Consignee International Isotopes, Inc. 4137 Commerce Circle Idaho Falls, ID 83401					
Two completed and signed copies of this Declaration must be handed to the operator		WARNING Failure to comply with all respects with the applicable Dangerous Goods Regulations may be in breach of the applicable law, subject to legal penalties.			
TRANSPORT DETAILS This shipment is within the limitations prescribed for: (delete non applicable) <table border="1"><tr><td>PASSENGER AIRCRAFT</td><td>CARGO AIRCRAFT ONLY</td></tr></table>		PASSENGER AIRCRAFT	CARGO AIRCRAFT ONLY	Airport of Departure	
PASSENGER AIRCRAFT	CARGO AIRCRAFT ONLY				
Airport of Destination:		Shipment type: (delete non-applicable) <table border="1"><tr><td>XXXXXXXXXX</td><td>RADIOACTIVE</td></tr></table>		XXXXXXXXXX	RADIOACTIVE
XXXXXXXXXX	RADIOACTIVE				
NATURE AND QUANTITY OF DANGEROUS GOODS UN Number or Identification Number, proper shipping name, Class or Division (specify hazard class), packing group (if required), and all other required information. UN2915, Radioactive Material, Type A Package, Class 7 Co-57 Resin Solid, One Type A Package x (value here) w/3g II Yellow TI = (insert value here) Dimensions L= cm x W= cm x H= cm (insert dimensions)					
Additional Handling Information This shipment contains radioactive material intended for use in or incident to medical research, diagnosis or treatment.					
I hereby declare that the contents of this consignment are fully and accurately described above by the proper shipping name, and are classified, packaged, marked and labeled/placarded, and are in all respects in proper condition for transport according to applicable International and National Governmental Regulations. I declare that all of the applicable air transport requirements have been met.		Name/Title of Signatory Shipper Name and Title Place and Date Insert Location and Date Signature (A typed signature may be used if the origin and destination are in the United States or its territories.) Signature Required			
EMG Contact		Emergency Telephone Number			
FOR RADIOACTIVE MATERIAL SHIPMENT ACCEPTABLE FOR PASSENGER AIRCRAFT, THE SHIPMENT CONTAINS RADIOACTIVE MATERIAL INTENDED FOR USE IN OR INCIDENT TO RESEARCH, MEDICAL DIAGNOSIS, OR TREATMENT. ADR EUROPEAN TRANSPORT STATEMENT, CARRIAGE IN ACCORDANCE WITH 1.1.4.2.1					

Emergency Response Information (Low to High Level Radiation)

POTENTIAL HAZARDS

HEALTH

- Radiation presents minimal risk to transport workers, emergency response personnel, and the public during transportation accidents. Packaging durability increases as potential hazard of radioactive content increases.
- Undamaged packages are safe. Contents of damaged packages may cause higher external radiation exposure or both external and internal radiation exposure if contents are released.
- Type A packages (cartons, boxes, drums, articles, etc.) identified as "Type A" by marking on packages or by shipping papers contain non-life endangering amounts. Partial releases might be expected if "Type A" packages are damaged in moderately severe accidents.
- Type B packages, and rarely occurring Type C packages (large and small, usually metal) contain the most hazardous amounts. They can be identified by package markings or by shipping papers. Life threatening conditions may exist only if contents are released or package shielding fails. Because of design, evaluation, and testing of packages, these conditions would be expected only for accidents of utmost severity.
- The rarely occurring "Special Arrangement" shipments may be of Type A, Type B, or Type C packages. Package type will be marked on packages, and shipment details will be on shipping papers.
- Radioactive White-I labels indicate radiation levels outside single, isolated, undamaged packages are very low [less than 0.005 mSv/h (0.5 mRem/h)].
- Radioactive Yellow-II and Yellow-III labeled packages have higher radiation levels. The transport index (TI) on the label identifies the maximum radiation level in mRem/h one meter from a single, isolated, undamaged package.
- Some radioactive materials cannot be detected by commonly available instruments.
- Water from cargo fire may cause pollution.

FIRE OR EXPLOSION

- Some of these materials may burn, but most do not ignite readily. Radioactivity does not change flammability or other properties of materials.
- Type B packages are designed and evaluated to withstand total engulfment in flames at temperatures of 800° C (1475° F) for a period of 30 minutes.

PUBLIC SAFETY

- In case of EMERGENCY, call Chemtrec at **1(800) 424-9300**. For International EMERGENCIES, Chemtrec can be reached at **+1(703) 527-3887**. The International Isotopes, Inc. Chemtrec account number is **11472**.
- Priorities for rescue, life-saving, first aid, fire control, and other hazards are higher than the priority for measuring radiation levels.
- Radiation Authority must be notified of accident conditions. Radiation Authority is usually responsible for decisions about radiological consequences and closure for emergencies.
- As an immediate precautionary measure, isolate spill or leak area for at least 25 meters (75 feet) in all directions.
 - ♦ Stay upwind, uphill, and/or upstream.
 - ♦ Keep unauthorized personnel away.

- Detain or isolate uninjured persons or equipment suspected to be contaminated; delay decontamination and cleanup until instructions are received from Radiation Authority.

PROTECTIVE CLOTHING

- Positive pressure self-contained breathing apparatus (SCBA) and structural firefighters' protective clothing will provide adequate protection against internal radiation exposure, but not external radiation exposure.

EVACUATION

Large Spill

- Consider initial downwind evacuation for at least 100 meters (330 feet).

Fire

- When a large quantity of this material is involved in a major fire, consider an initial evacuation distance of 300 meters (1000 feet) in all directions.

EMERGENCY RESPONSE

Fire

- Presence of radioactive material will not influence the fire control processes and should not influence selection of techniques.
- Move containers from fire area if you can do it without risk.
- Do not move damaged packages; move undamaged packages out of fire zone.

Small Fire

- Dry chemical, CO₂, water spray, or regular foam.

Large Fire

- Water spray, fog (flooding amounts)
- Dike fire-control water for later disposal

Spill or Leak

- Do not touch damaged packages or spilled material.
- Damp surfaces on undamaged or slightly damaged packages are seldom an indication of packaging failure. Most packaging for liquid content has inner containers and/or inner absorbent materials.
- Cover liquid spill with sand, earth, or other noncombustible absorbent material.

FIRST AID

- Ensure that medical personnel are aware of the material(s) involved and take precautions.
- Call 911 or emergency medical service.
- Medical problems take priority over radiological concerns.
- Use first aid treatment according to the nature of the injury.
- Do not delay care and transport of a seriously injured person.
- Give artificial respiration if victim is not breathing.
- Administer oxygen if breathing is difficult.
- In case of contact with substance, immediately flush skin or eyes with running water for at least 20 minutes.
- Injured persons contaminated by contact with released material are not a serious hazard to health care personnel, equipment, or facilities.



International Isotopes

INCORPORATED

4137 Commerce Circle
Idaho Falls, ID 83401
208.524.5300