



**NUCLEAR  
SHIELDS**



**CATALOG**

2023



# NUCLEAR SHIELDS

## STORAGE

Page 7	SOURCE STORAGE CABINET	SSC1C
Page 9	COMPACT LEAD SHIELDED SAFES	SC1432
Page 11	SHIELDED HOTLAB CABINETS	SC122
Page 13	PASS THROUGH BOX	PTB112 / PTB1113
Page 14	LEAD CONTAINERS W/ HANDLEBAR	LSC1160
Page 15	SHIELDED STORAGE CONTAINERS	LS0070
Page 16	TUNGSTEN CONTAINER	VS246
Page 17	LEAD VIAL PIG	LVP112
Page 19	SHIELDED ELUTION CONTAINER	LVP215-E
Page 21	TUNGSTEN TRANSPORT CONTAINER	VS253

## DISPOSAL

Page 25	MOBILE SHIELDED WASTE BIN	S0009
Page 26	MOBILE SHIELDED CONTAINER	LS0069
Page 27	PET MOBILE WASTE BIN	SWB1935-27L
Page 28	MOBILE SHIELDED WASTE BIN	SWB126-239L
Page 29	MOBILE SHIELDED WASTE BIN	SWB112-45L
Page 31	SHIELDED PEDAL WASTE BIN	SWB153
Page 32	SHIELDED WASTE BIN 18 LITER	SWB193
Page 33	SHIELDED SHARPS CONTAINER	SWB113
Page 35	CYCLOTRON TARGET WASTE CASTLE	SWB141
Page 37	NUCLEAR WASTE CONTAINER	NWC1
Page 39	STORAGE & TRANSPORT CASKS	SWB1120

## EQUIPMENT

Page 43	BIG-SCREW SYRINGE SHIELDS	SS2BS
Page 45	CLIP-LOCK SYRINGE SHIELDS	SS2CL
Page 47	LEAD GLASS SYRINGE SHIELDS	SS2LGCL
Page 49	PET SYRINGE SHIELDS	SS2BSP
Page 51	TUNGSTEN VIAL SHIELDS	VS21
Page 53	LEAD GLASS VIAL SHIELDS	VSLG2112
Page 55	DOSE DRAWING STATION	VSDDS
Page 56	SHIELDED SYRINGE CARRIER	SSC11
Page 57	PET SHIELDED SYRINGE CARRIER	SSC11
Page 58	SYRINGE HOLDER	SHR1112R
Page 59	MOBILE LEAD CONTAINER	SWB135
Page 61	LOW BACKGROUND LEAD CASTLES	LC201

## WORKING AREA

Page 65	MOBILE PET BARRIER	MB112
Page 67	L-BLOCK SHIELD	TTS111
Page 69	TABLETOP WORKSTATION	SW145
Page 71	PET QUALITY CONTROL WORKSTATION	SW125
Page 73	SPECT QUALITY CONTROL WORKSTATION	SW1205
Page 74	CYCLOTRON L-BLOCK STATION	SW135
Page 75	MOBILE PET WORKSTATION	SW115
Page 77	SHIELDED NUCLEAR GLOVEBOXES	SGB115
Page 79	SHIELDED BIOSAFETY CABINET	BSC12



# CONSTRUCTION

Page 83	Adhesive lead sheets	RSW11X
Page 85	Adhesive lead parts	LP-ADHESIVE
Page 87	Lead glass	LG100 - LG200
Page 88	Lead blankets	LBN11





**NUCLEAR  
SHIELDS**



# STORAGE

Page 7	SOURCE STORAGE CABINET	SSC1C
Page 9	COMPACT LEAD SHIELDED SAFES	SC1432
Page 11	SHIELDED HOTLAB CABINETS	SC122
Page 13	PASS THROUGH BOX	PTB112 / PTB1113
Page 14	LEAD CONTAINERS W/ HANDLEBAR	LSC1160
Page 15	SHIELDED STORAGE CONTAINERS	LS0070
Page 16	TUNGSTEN CONTAINER	VS246
Page 17	LEAD VIAL PIG	LVP112
Page 19	SHIELDED ELUTION CONTAINER	LVP215-E
Page 21	TUNGSTEN TRANSPORT CONTAINER	VS253





**NUCLEAR  
SHIELDS**



# SOURCE STORAGE CABINET

SSC1C

## Specifications

Finishing material	Coated steel
Shielding material	Lead
Shielding thickness	25 mm lead
Outside dimensions	2025 x 672 x 2076 mm (w x d x h)
Inside dimensions	Drawers: 280 x 460 x 305 mm (w x d x h) Doors: 355 x 380 x 395 mm (w x d x h)
Weight	+/- 5400 Kg

## Features

- Store all your radioactive materials safely
- Sophisticated access control system
- Small footprint
- Quick & easy installation (also in small spaces)





**NUCLEAR  
SHIELDS**





# COMPACT LEAD SHIELDED SAFES

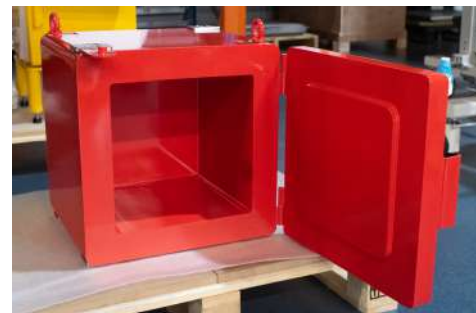
## Specifications

Finishing material	Coated steel
Shielding material	Lead
Shielding thickness	See standard models
Inside dimensions	See standard models
Weight	See standard models

## Features

- Designed to safely store radioactive materials
- Small and modular concept
- Available in many colors and dimensions
- Can be stacked together or used as a standalone safe
- Bottom frame with legs and/or wheels optional

Article code	Shielding thickness	Inside dimensions (w x d x h)	Weight
<b>SC1317</b>	17 mm lead	334 x 334 x 200 mm	+/- 200 kg
<b>SC1432</b>	32 mm lead	204 x 204 x 204 mm	+/- 200 kg
<b>SC1440</b>	40 mm lead	284 x 284 x 360 mm	+/- 450 kg
<b>SC1440-2</b>	40 mm lead	285 x 285 x 285 mm	+/- 420 kg
<b>SC14040</b>	32 mm lead	400 x 400 x 400 mm	+/- 560 kg
<b>SC1462</b>	62 mm lead	150 x 150 x 150 mm	+/- 250 kg
<b>SC1510</b>	10 mm lead (20 mm lead in front door)	300 x 300 x 300 mm	+/- 140 kg





**NUCLEAR  
SHIELDS**



# SHIELDED HOTLAB CABINETS

## Specifications

Finishing material	Stainless steel + HPL
Shielding material	Lead
Shielding thickness	6 / 12.5 / 25 mm
Outside dimensions	730 x 550 x 1005 mm (w x d x h)
Inside dimensions	SC121: 341 x 396 x 152 mm (w x d x h) SC122: 355 x 443 x 282 mm (w x d x h) SC123: 355 x 443 x 156 mm (w x d x h) SC126: 122 x 443 x 156 mm (w x d x h)

## Features

- Modular in combination with stainless steel tabletop
- Multiple models to choose from
- Available in many HPL colors and designs
- Clean design for hotlabs





**NUCLEAR  
SHIELDS**



# PASS THROUGH BOX

PTB112

## Specifications

Finishing material	Stainless steel
Shielding material	Lead
Shielding thickness	5 mm
Inside dimensions	400 x 530 x 400 mm
Weight	150 Kg

PTB1113

## Specifications

Finishing material	Stainless steel
Shielding material	Lead
Shielding thickness	10 mm
Outer Door Shielding Thickness	30 mm
Outside dimensions	753 x 817 x 1671 mm (w x d x h)
Inside dimensions	596 x 735 x 750 mm (Top)
	596 x 753 x 612 mm (Bottom)
Weight	127 Kg



# LEAD CONTAINERS W/ HANDLEBAR

LSC1160

## Specifications

Finishing material	Stainless steel
Shielding material	Lead
Shielding thickness	60 mm
Outside dimensions	200 x 270 mm (diameter x height)
Inside dimensions	50 x 120 mm (diameter x height)
Weight	60 Kg

## Features

- Integrated seal to hermetically close the lid
- Can be locked using two padlocks
- Stainless steel finishing for easy cleaning
- Two lifting eyes can be attached to the container
- Lead casted and not glued for durability



# SHIELDED STORAGE CONTAINERS

LS0070

## Specifications

Finishing material	Stainless steel
Shielding material	Lead
Shielding thickness	35 mm
Outside dimensions	160 x 260 mm (diameter x height)
Inside dimensions	80 x 175 mm (diameter x height)
Weight	+/- 45 Kg

## Features

- 3 mm stainless steel outside finishing
- Can be fastened with two M6 nuts
- Lead casted and not glued for durability



# TUNGSTEN CONTAINER

VS246 / VS242

## Specifications

Finishing material	Tungsten
Shielding material	Tungsten
Shielding thickness	6 / 20 mm
Inside dimensions	35 x 80 mm (diameter x height)
Weight	2 Kg / 8,6 kg

## Features

- Completely made from tungsten
- Small tungsten plug for quick access
- Large threaded cap to insert vial





# LEAD VIAL PIG

LVP112

## Specifications

Finishing material	Coated lead
Shielding material	Lead
Shielding thickness	25 mm (1")
Outside dimensions	120 x 94 mm (diameter x height)
Inside dimensions	44 x 70 mm (diameter x height)
Weight	8.2 Kg

## Features

- Safely store and transport your radioactive materials
- Available in multiple lead thicknesses
- Simple and easy-to-clean design





**NUCLEAR  
SHIELDS**



# SHIELDED ELUTION CONTAINER

LVP215-E

## Specifications

Finishing material	Stainless steel exterior / lead interior
Shielding material	Lead
Shielding thickness	47.5 mm
Outside dimensions	130 x 160 mm (diameter x height)
Inside dimensions	30 x 56 mm (diameter x height)
Weight	+/- 23 kg

## Features

- Two tapered holes for insertion of tubes
- Clean stainless steel exterior
- Lid can be secured in place





**NUCLEAR  
SHIELDS**



# TUNGSTEN TRANSPORT CONTAINER

VS253

## Specifications

Finishing material	Tungsten
Shielding material	Tungsten
Shielding thickness	30 mm
Outside dimensions	92 x 130 mm (diameter x height)
Inside dimensions	33 x 58 mm (diameter x height)
Weight	13.7 Kg

## Features

- Convenient handle for easy transportation
- Strong bayonet locking mechanism with safety pin
- Integrated seal to prevent spilling





**NUCLEAR  
SHIELDS**



# DISPOSAL

Page 25	MOBILE SHIELDED WASTE BIN	S0009
Page 26	MOBILE SHIELDED CONTAINER	LS0069
Page 27	PET MOBILE WASTE BIN	SWB1935-27L
Page 28	MOBILE SHIELDED WASTE BIN	SWB126-239L
Page 29	MOBILE SHIELDED WASTE BIN	SWB112-45L
Page 31	SHIELDED PEDAL WASTE BIN	SWB153
Page 32	SHIELDED WASTE BIN 18 LITER	SWB193
Page 33	SHIELDED SHARPS CONTAINER	SWB113
Page 35	CYCLOTRON TARGET WASTE CASTLE	SWB141
Page 37	NUCLEAR WASTE CONTAINER	NWC1
Page 39	STORAGE & TRANSPORT CASKS	SWB1120





**NUCLEAR  
SHIELDS**





# MOBILE SHIELDED WASTE BIN

S0009

## Specifications

Finishing material	Stainless steel (interior & exterior)
Shielding material	Lead
Shielding thickness	12 / 25 mm
Outside dimensions	494 x 494 x 811 mm (w x d x h)
Inside dimensions	430 x 430 x 580 mm (w x d x h)
Weight	+/- 260 Kg

## Features

- Interior and exterior finished with stainless steel
- Two ways of opening to minimize handling times
- Gas springs to support while opening & closing the large lid



For all your shielding projects.

Radiation shielding | Disposal 25/89

# MOBILE SHIELDED CONTAINER

LS0069

## Specifications

Outside material	Stainless steel exterior / coated lead interior
Shielding material	Lead
Shielding thickness	5 mm
Outside dimensions	800 x 800 x 1.000 mm (w x d x h) / 1.600 x 800 x 1.000 mm (w x d x h)
Inside dimensions	765 x 765 x 965 mm (w x d x h) / 1.462 / 644 / 927 mm (w x d x h)
Port dimensions	342 x 242 mm (w x d)
Weight	+/- 450 kg / 803 kg

## Features

- Small sliding lid for quick disposal of radioactive waste
- Convenient mobile design
- Supported large lid for disposal of large volumes
- Both lids are lockable with padlocks
- Strong wheeling structure for relocating the container
- Available in 800x800mm and 1600x800mm model



# PET MOBILE WASTE BIN

SWB1935-27L

## Specifications

Finishing material	Stainless steel interior and exterior
Shielding material	Lead
Shielding thickness	35 mm
Inside dimensions	300 x 300 x 300 mm (w x d x h)
Weight	385 kg

## Features

- Suitable for PET
- Gas spring supported top lid
- Can be locked with a padlock



# MOBILE SHIELDED WASTE BIN

SWB126-239L

## Specifications

Outside material	Stainless steel exterior
Shielding material	Lead
Shielding thickness	6 mm
Outside dimensions	638 x 795 x 960 mm (w x d x h)
Inside dimensions	555 x 555 x 776 mm (w x d x h)
Port dimensions	300 x 300 mm (w x d)
Weight	287 kg

## Features

- Small sliding lid for quick disposal of radioactive waste
- Convenient mobile design
- Supported large lid for disposal of large volumes
- Big handle bar for quick movement
- Strong wheeling structure for relocating the container



# MOBILE SHIELDED WASTE BIN

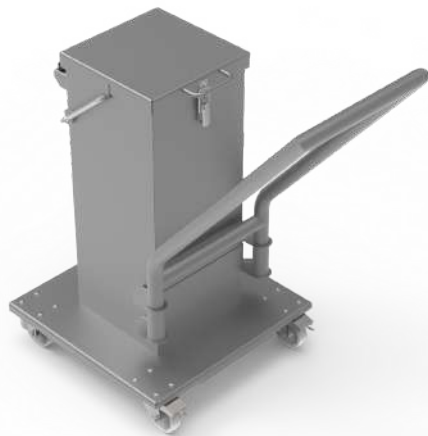
SWB122-45L

## Specifications

Finishing material	Stainless steel interior
Shielding material	Lead
Shielding thickness	20 mm
Outside dimensions	583 x 583 x 906 mm (w x d x h)
Inside dimensions	255 x 255 x 718 mm (w x d x h)
Weight	290 kg

## Features

- Big handlebar for easy movement
- Lockable wheels
- Can be locked with a padlock





**NUCLEAR  
SHIELDS**



# SHIELDED PEDAL WASTE BIN

## Specifications

Finishing material	Stainless steel exterior / Painted lead interior
Shielding material	Lead
Shielding thickness	3 / 6 mm
Volume	27L / 45L / 80L
Weight	See table on the right

## Features

- Available in multiple sizes and shielding thicknesses
- Pedal opening for ergonomic opening of shielded lid
- Optional mobile platform available to easily transport
- Clean stainless steel exterior finishing

Article code	Shielding	Inside dimensions (w x d x h)	Weight
<b>SWB153-27L</b>	3 mm lead	275 x 275 x 370 mm	+/- 29 kg
<b>SWB153-45L</b>	3 mm lead	275 x 275 x 520 mm	+/- 37 kg
<b>SWB153-80L</b>	3 mm lead	370 x 440 x 565 mm	+/- 90 kg
<b>SWB156-27L</b>	6 mm lead	275 x 275 x 370 mm	+/- 50 kg
<b>SWB156-45L</b>	6 mm lead	275 x 275 x 520 mm	+/- 64 kg
<b>SWB153-P</b>	Mobile platform		



# SHIELDED WASTE BIN 18 LITER

SWB193

## Specifications

Finishing material	Stainless steel exterior, coated lead interior
Shielding material	Lead
Shielding thickness	3 mm
Outside dimensions	262 x 181 x 555 mm (w x d x h)
Inside dimensions	250 x 150 x 555 mm (w x d x h)
Weight	26,15 Kg

## Features

- Compact tabletop version
- Easy to use hinged opening
- Easy to clean stainless steel housing





# SHIELDED SHARPS CONTAINER

SWB113 / SWB116

## Specifications

Finishing material	Stainless steel exterior, coated lead interior
Shielding material	Lead
Shielding thickness	3 / 6 mm
Outside dimensions	228 x 273 x 295 mm (w x d x h)
Inside dimensions	191/185 x 191/185 x 250/244 mm (w x d x h)
Weight	20 / 35 Kg
Port dimensions	120 x 70 mm

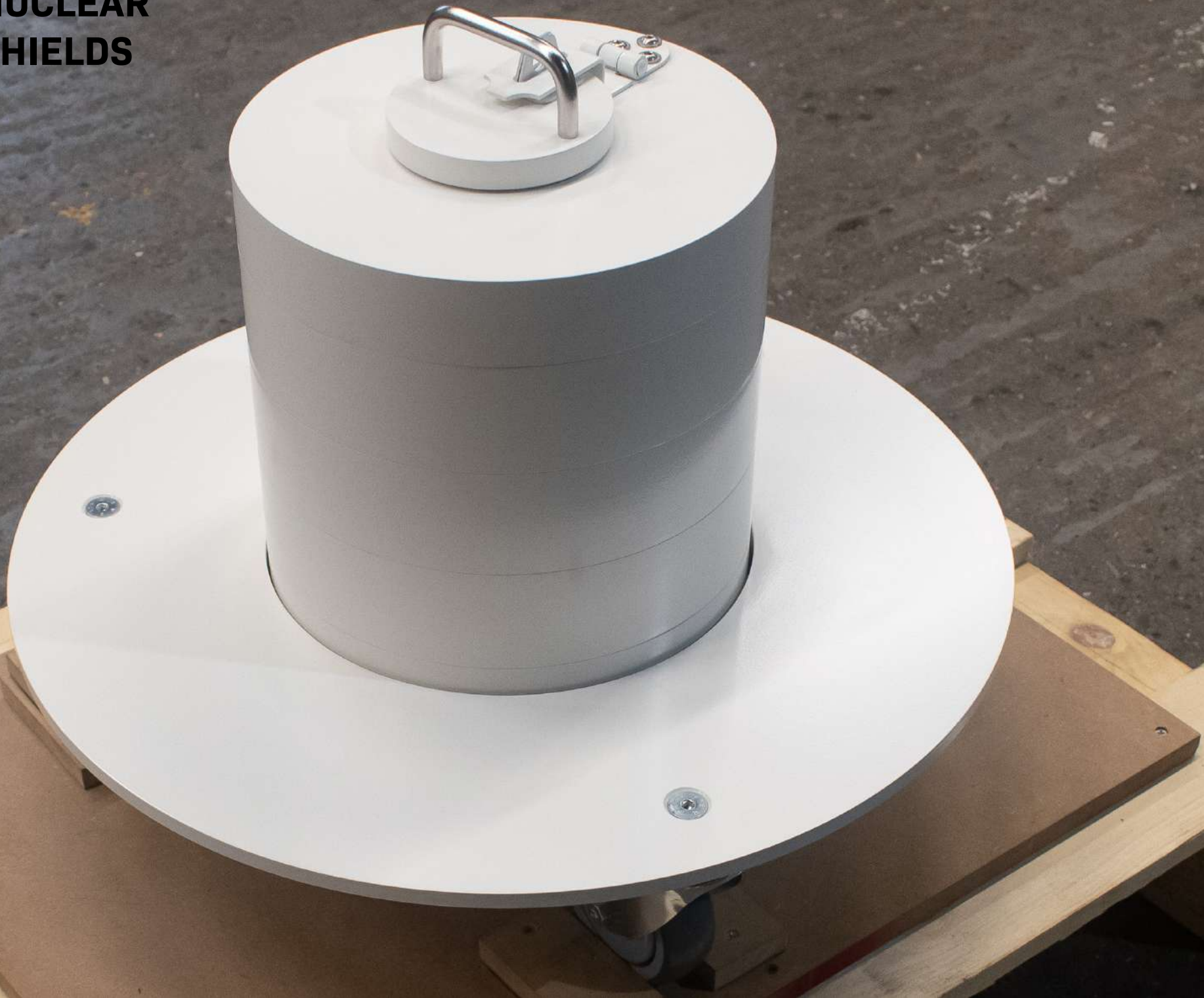
## Features

- No heavy top lid that you have to lift off
- Small lid to quickly dispose of sharps
- Convenient handles to move container





**NUCLEAR  
SHIELDS**



# CYCLOTRON TARGET WASTE CASTLE

SWB141

## Specifications

Finishing material	Coated steel
Shielding material	Lead
Shielding thickness	100 mm
Outside dimensions	550 x 450 mm (diameter x height)
Inside dimensions	60 x 240 mm (diameter x height)
Weight	+/- 230 Kg

## Features

- Inner stainless steel tube can be taken out
- Lockable latch for padlock
- Easily transportable with wheels
- Additional lead shielding rings optional





**NUCLEAR  
SHIELDS**



# NUCLEAR WASTE CONTAINER

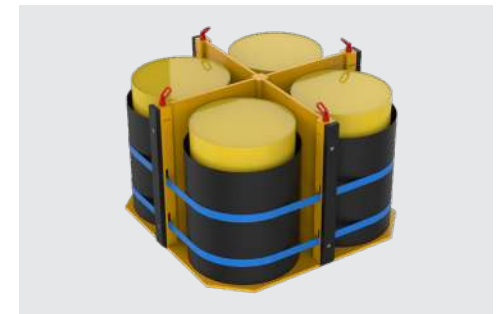
NWC1

## Specifications

Finishing material	Multi-layer coated steel
Shielding material	Lead / steel
Shielding thickness	0 / 10 / 20 / 30 / 40 / 50 mm lead
Outside dimensions	1.730 x 1.730 x 1.267 mm (w x d x h)
Inside dimensions	Request brochure for details
Weight	Request brochure for details

## Features

- Store your LLW/ILW directly, or overpack your drums
- Multi-layer leak prevention design
- IP1 or IP2 (pending on testing)
- Multiple ways to handle the container and drum handling system





**NUCLEAR  
SHIELDS**



# STORAGE & TRANSPORT CASKS

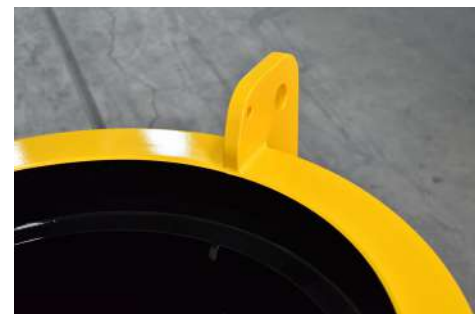
SWB1120

## Specifications

Finishing material	Coated steel
Shielding material	Lead + steel
Shielding thickness	95 mm lead + 25 mm steel in sides / 72 mm lead + 30 mm steel in bottom + top
Outside dimensions	1000 x 1000 x 1567 mm (w x d x h)
Inside dimensions	660 x 937 mm (diameter x h)
Weight	4.590 Kg

## Features

- Store all your radioactive materials safely
- Designed for overpacking and transportation of 200 liter drums
- Easily picked up with a forklift or lifted by a crane
- Can be fastened to a (remote controlled) trolley on the bottom frame
- Container seals with registration number for your registration system.





**NUCLEAR  
SHIELDS**





# EQUIPMENT

Page 43	BIG-SCREW SYRINGE SHIELDS	SS2BS
Page 45	CLIP-LOCK SYRINGE SHIELDS	SS2CL
Page 47	LEAD GLASS SYRINGE SHIELDS	SS2LGCL
Page 49	PET SYRINGE SHIELDS	SS2BSP
Page 51	TUNGSTEN VIAL SHIELDS	VS21
Page 53	LEAD GLASS VIAL SHIELDS	VSLG2112
Page 55	DOSE DRAWING STATION	VSDDS
Page 56	SHIELDED SYRINGE CARRIER	SSC11
Page 57	PET SHIELDED SYRINGE CARRIER	SSC11
Page 58	SYRINGE HOLDER	SHR1112R
Page 59	MOBILE LEAD CONTAINER	SWB135
Page 61	LOW BACKGROUND LEAD CASTLES	LC201





**NUCLEAR  
SHIELDS**



# BIG-SCREW SYRINGE SHIELDS

SS2BS

## Specifications

Finishing material	Anodized aluminum
Shielding material	Tungsten / lead glass (5.2 g/cm <sup>3</sup> )
Shielding thickness	2 mm tungsten
Outside dimensions	Depending on model
Inside dimensions	Depending on model
Weight	Depending on model

## Features

- High quality anodized aluminum finishing
- Convenient big-screw to secure your syringes
- Your syringe diameter will always fit because of the big-screw
- Tungsten barrel painted white on the inside for better visibility
- Lead glass edges covered by anodized aluminum case

Please refer to the models below, or ask for the size chart document.



### Versions for 1 ml

SS2BS1-1	8.8 x 72 mm
SS2BS1-2	8.8 x 76 mm
SS2BS1-3	11.5 x 76 mm

### Versions for 2 ml

SS2BS2-4	11.5 x 53 mm
SS2BS2-5	11.5 x 60 mm

### Versions for 3 ml

SS2BS3-6	11.5 x 65 mm
SS2BS3-7	11.5 x 69 mm

### Versions for 5 ml

SS2BS5-8	15.4 x 61 mm
SS2BS5-9	15.4 x 65 mm
SS2BS5-10	15.4 x 68 mm

### Versions for 10 ml

SS2BS10-11	18.2 x 75 mm
SS2BS10-12	18.2 x 85 mm

Color	Green anodized	Color	Silver anodized	Color	Gold anodized	Color	Blue anodized	Color	Red anodized
-------	----------------	-------	-----------------	-------	---------------	-------	---------------	-------	--------------





**NUCLEAR  
SHIELDS**



# CLIP-LOCK SYRINGE SHIELDS

SS2CL

## Specifications

Finishing material	Anodized aluminum
Shielding material	Tungsten / lead glass (5.2 g/cm <sup>3</sup> )
Shielding thickness	2 mm tungsten
Outside dimensions	Depending on model
Inside dimensions	Depending on model
Weight	Depending on model

## Features

- High quality anodized aluminum finishing
- Convenient clip-lock to secure your syringes
- Tungsten barrel painted white on the inside for better visibility
- Lead glass edges covered by anodized aluminum case

Please refer to the models below, or ask for the size chart document.



### Versions for 1 ml

SS2CL1-1	8.8 x 72 mm
SS2CL1-2	8.8 x 76 mm
SS2CL1-3	11.5 x 76 mm

### Versions for 2 ml

SS2CL2-4	11.5 x 53 mm
SS2CL2-5	11.5 x 60 mm

### Versions for 3 ml

SS2CL3-6	11.5 x 65 mm
SS2CL3-7	11.5 x 69 mm

### Versions for 5 ml

SS2CL5-8	15.4 x 61 mm
SS2CL5-9	15.4 x 65 mm
SS2CL5-10	15.4 x 68 mm

### Versions for 10 ml

SS2CL10-11	18.2 x 75 mm
SS2CL10-12	18.2 x 85 mm

Color	Green anodized	Color	Silver anodized	Color	Gold anodized	Color	Blue anodized	Color	Red anodized
-------	----------------	-------	-----------------	-------	---------------	-------	---------------	-------	--------------



For all your shielding projects.



**NUCLEAR  
SHIELDS**



# LEAD GLASS SYRINGE SHIELDS

SS2LGCL

## Specifications

Finishing material	Anodized aluminum
Shielding material	Tungsten / lead glass (5.2 g/cm <sup>3</sup> )
Shielding thickness	2 mm tungsten / 7 mm lead glass
Outside dimensions	Depending on model
Inside dimensions	Depending on model
Weight	Depending on model

## Features

- Optimal visibility with 360° viewing window
- Rubber O-ring for lead glass protection
- Quick & easy Clip-Lock mechanism

Please refer to the models below, or ask for the size chart document.



### Versions for 1 ml

SS2LGCL1-1	8.8 x 72 mm
SS2LGCL1-2	8.8 x 76 mm
SS2LGCL1-3	11.5 x 76 mm

### Versions for 2 ml

SS2LGCL2-4	11.5 x 53 mm
SS2LGCL2-5	11.5 x 60 mm

### Versions for 3 ml

SS2LGCL3-6	11.5 x 65 mm
SS2LGCL3-7	11.5 x 69 mm

### Versions for 5 ml

SS2LGCL5-8	15.4 x 61 mm
SS2LGCL5-9	15.4 x 65 mm
SS2LGCL5-10	15.4 x 68 mm

### Versions for 10 ml

SS2LGCL10-11	18.2 x 75 mm
SS2LGCL10-12	18.2 x 85 mm

Color	Green anodized	Color	Silver anodized	Color	Gold anodized	Color	Blue anodized	Color	Red anodized
-------	----------------	-------	-----------------	-------	---------------	-------	---------------	-------	--------------



For all your shielding projects.



**NUCLEAR  
SHIELDS**





# PET SYRINGE SHIELDS

SS2BSP

## Specifications

Finishing material	Anodized aluminum
Shielding material	Tungsten / lead glass (5.2 g/cm <sup>3</sup> )
Shielding thickness	8 mm tungsten
Outside dimensions	Depending on model
Inside dimensions	Depending on model
Weight	Depending on model

## Features

- Grip in anodized aluminum case
- Smaller lead glass viewing window to optimize protection
- Trusted Big-Screw mechanism

Please refer to the models below, or ask for the size chart document.



### Versions for 1 ml

SS2BS1-1P	8.8 x 72 mm
SS2BS1-2P	8.8 x 76 mm
SS2BS1-3P	11.5 x 76 mm

### Versions for 2 ml

SS2BS2-4P	11.5 x 53 mm
SS2BS2-5P	11.5 x 60 mm

### Versions for 3 ml

SS2BS3-6P	11.5 x 65 mm
SS2BS3-7P	11.5 x 69 mm

### Versions for 5 ml

SS2BS5-8P	15.4 x 61 mm
SS2BS5-9P	15.4 x 65 mm
SS2BS5-10P	15.4 x 68 mm

### Versions for 10 ml

SS2BS10-11P	18.2 x 75 mm
SS2BS10-12P	18.2 x 85 mm

Color	Green anodized	Color	Silver anodized	Color	Gold anodized	Color	Blue anodized	Color	Red anodized
-------	----------------	-------	-----------------	-------	---------------	-------	---------------	-------	--------------





**NUCLEAR  
SHIELDS**



# TUNGSTEN VIAL SHIELDS

VS21

## Specifications

Finishing material	Anodized aluminum + tungsten
Shielding material	Tungsten
Shielding thickness	4 or 6 mm
Outside dimensions	49 x 85 or 50 x 91 mm (depends on shielding)
Inside dimensions	27 x 61 mm (diameter x height)
Weight	1.23 or 1.72 Kg (depends on shielding)
Cap type	Magnetic or sliding (see images below)

## Features

- High quality anodized aluminum finishing
- Lead glass covered by anodized aluminum case
- Magnetic or sliding vial cap available
- Bottom and top parts can easily be twisted off
- Inserts available to position vials
- Fits Vials up to 15 ml





**NUCLEAR  
SHIELDS**



# LEAD GLASS VIAL SHIELDS

VSLG2112

## Specifications

Finishing material	Anodized aluminum + lead glass
Shielding material	Tungsten / lead glass
Shielding thickness	4 mm tungsten / 12.5 mm lead glass
Outside dimensions	65 x 91.60 mm (diameter x height)
Inside dimensions	30 x 59.30 mm (diameter x height)
Weight	1.1 kg
Cap type	Magnetic twist

## Features

- Maximum visibility
- High quality anodized aluminum finishing
- Lead glass covered by anodized aluminum case
- Bottom and top parts can easily be disassembled
- Inserts available to position vials





**NUCLEAR  
SHIELDS**



# DOSE DRAWING STATION

VSDDS

## Specifications

Finishing material	Anodized Aluminium (Black)
Dimensions	125 x 200 x 405 mm (W x D x H)
Angle	45° - 90°
Application	Magnetic-, Sliding and Lead Glass Vial Shields
Weight	1,2 Kg
Options	Place holders for Syringe Shields

## Features

- Easy to use
- Ergonomic working position
- Adjustable



# SHIELDED SYRINGE CARRIER

SSC113

## Specifications

Finishing material	Stainless steel
Shielding material	Lead
Shielding thickness	3 mm
Outside dimensions	277 x 112 x 209 mm (w x d x h)
Inside dimensions	225 x 60 x 45 mm (w x d x h)
Weight	5 Kg

SSC116

## Specifications

Finishing material	Stainless steel
Shielding material	Lead
Shielding thickness	6 mm
Outside dimensions	277 x 112 x 209 mm (w x d x h)
Inside dimensions	225 x 60 x 45 mm (w x d x h)
Weight	7,5 Kg





# PET SHIELDED SYRINGE CARRIER

SSC1110

## Specifications

Finishing material	Stainless steel
Shielding material	Lead
Shielding thickness	10 mm
Shielding tickness (Short sides)	18 mm
Outside dimensions	298 x 118 x 220 mm (w x d x h)
Inside dimensions	225 x 60 x 45 mm (w x d x h)
Weight	11,7 Kg

## Features

- Simply carry syringes
- Easy cleaning and decontamination



# SYRINGE HOLDER

SH1112R

## Specifications

Finishing material	Stainless steel
Shielding material	Lead
Shielding thickness	12,5 mm
Outside dimensions	75 x 170 mm (diameter x height)
Inside dimensions	35 x 153 mm (diameter x height)
Weight	3,75 Kg

## Features

- Optimized cleanability
- Optional recapper



# MOBILE LEAD CONTAINER

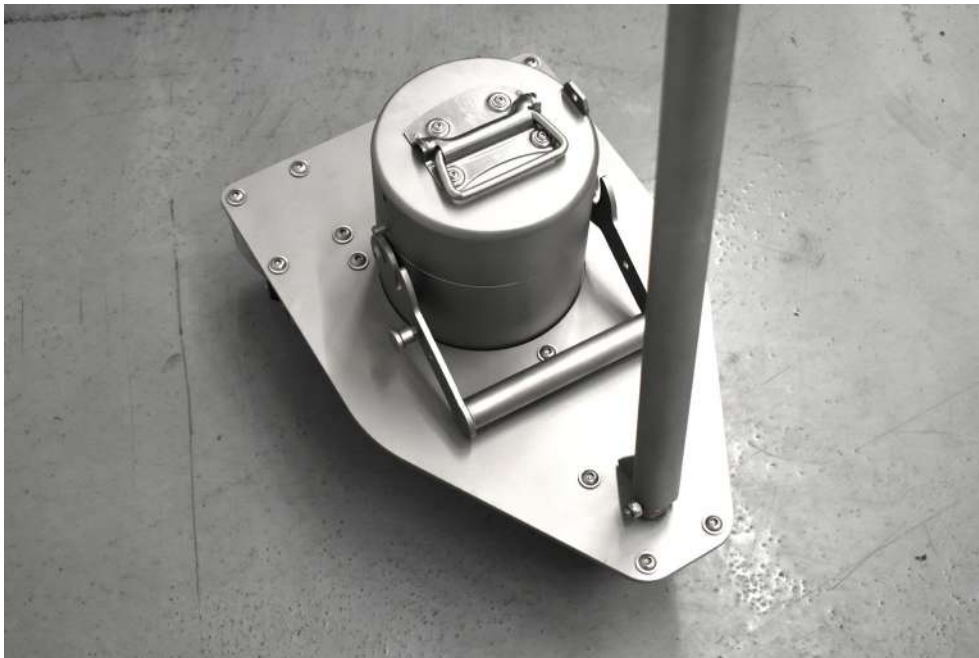
SWB135

## Specifications

Finishing material	Coated steel / coated lead
Shielding material	Lead
Shielding thickness	50 mm
Outside dimensions	Mobile cart: 480 x 320 x 1000 mm (w x d x h) lead pot: 170 x 237 mm (diamter x h)
Inside dimensions	lead pot: 60 x 127 mm (diameter x h)
Weight	65 Kg

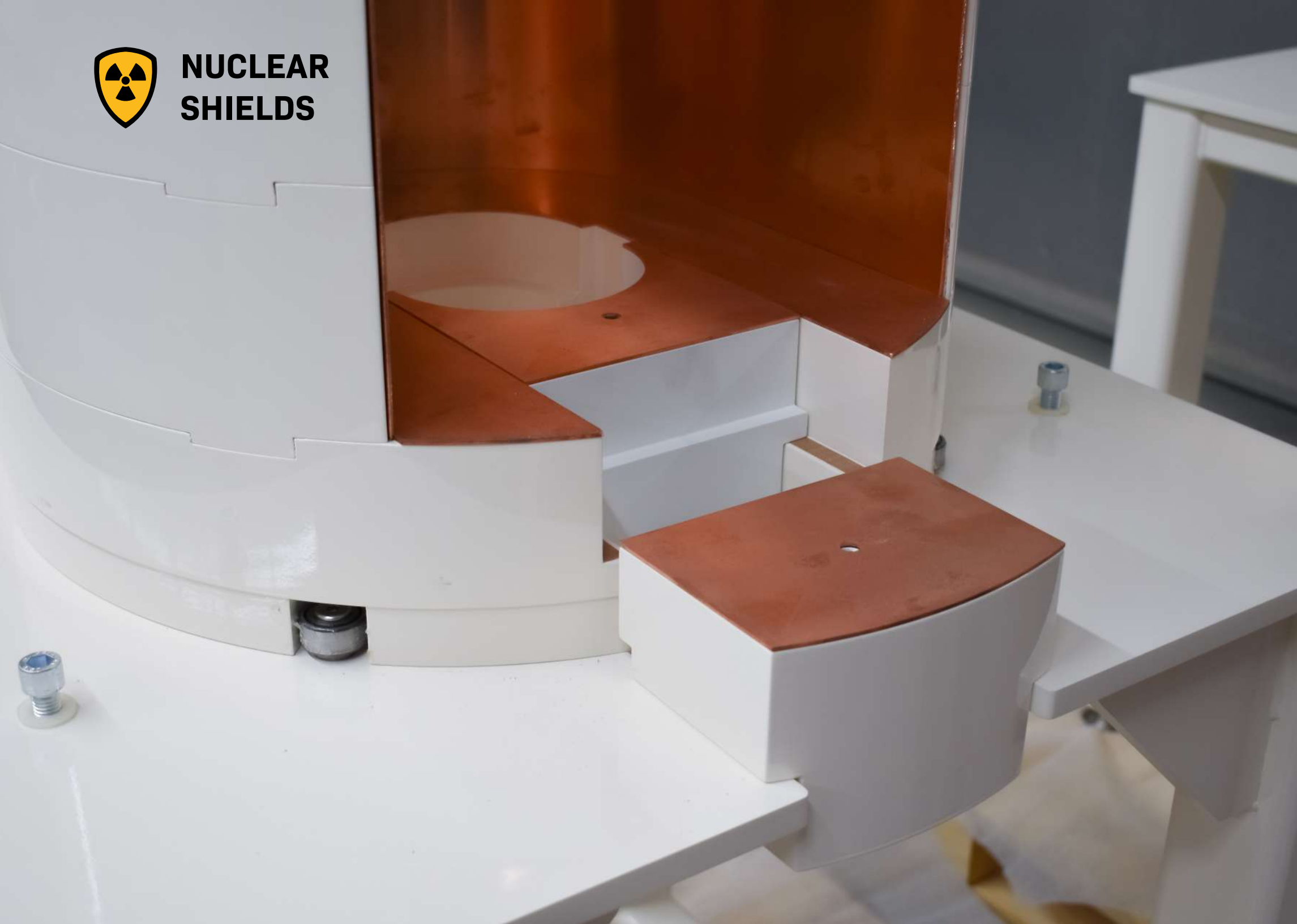
## Features

- Optimal for PET
- Easy, secure and ergonomic transportation
- Lifting eyes integrated for lead pot
- Swiveling handlebar and front wheel for optimized flexibility





**NUCLEAR  
SHIELDS**



# LOW BACKGROUND LEAD CASTLES

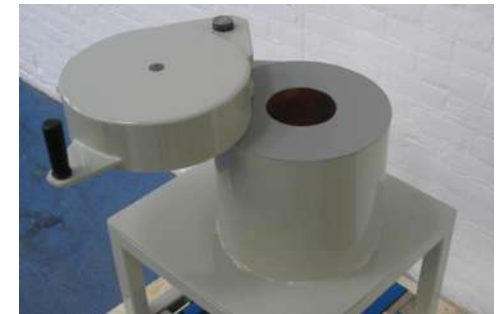
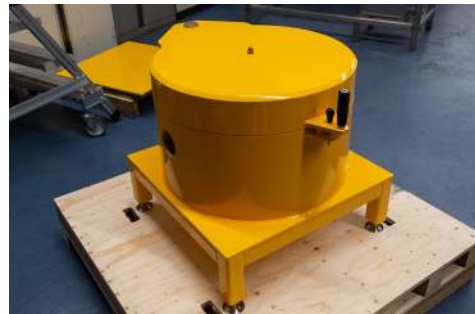
LC201

## Specifications

Finishing material	Coated lead
Shielding material	Lead / low background lead / copper
Shielding thickness	Contact us for more information
Inside dimensions	Contact us for more information

## Features

- Low background lead used for minimal background radiation
- Available in many models for your application
- Possibility of inner liners





**NUCLEAR  
SHIELDS**



# WORKING AREA

Page 65	MOBILE PET BARRIER	MB112
Page 67	L-BLOCK SHIELD	TTS111
Page 69	TABLETOP WORKSTATION	SW145
Page 71	PET QUALITY CONTROL WORKSTATION	SW125
Page 73	SPECT QUALITY CONTROL WORKSTATION	SW1205
Page 74	CYCLOTRON L-BLOCK STATION	SW135
Page 75	MOBILE PET WORKSTATION	SW115
Page 77	SHIELDED NUCLEAR GLOVEBOXES	SGB115





**NUCLEAR  
SHIELDS**





# MOBILE PET BARRIER

MB112

## Specifications

Finishing material	Coated steel
Shielding material	Lead / lead glass
Shielding thickness	10 / 20 / 30 mm
Outside dimensions	1190 x 555 x 1655 mm (w x d x h)
Shielding dimensions	400 x 10/20/30 x 1500 mm (w x d x h)
Lead glass dimensions	340 x 220 x 55 mm (w x d x h)
Weight	Depending on configuration

## Features

- Stainless steel tray behind shielding to store your equipment
- A standing platform can be placed for optimized ergonomics
- Large lead glass viewing window
- Available in multiple shielding thicknesses





**NUCLEAR  
SHIELDS**

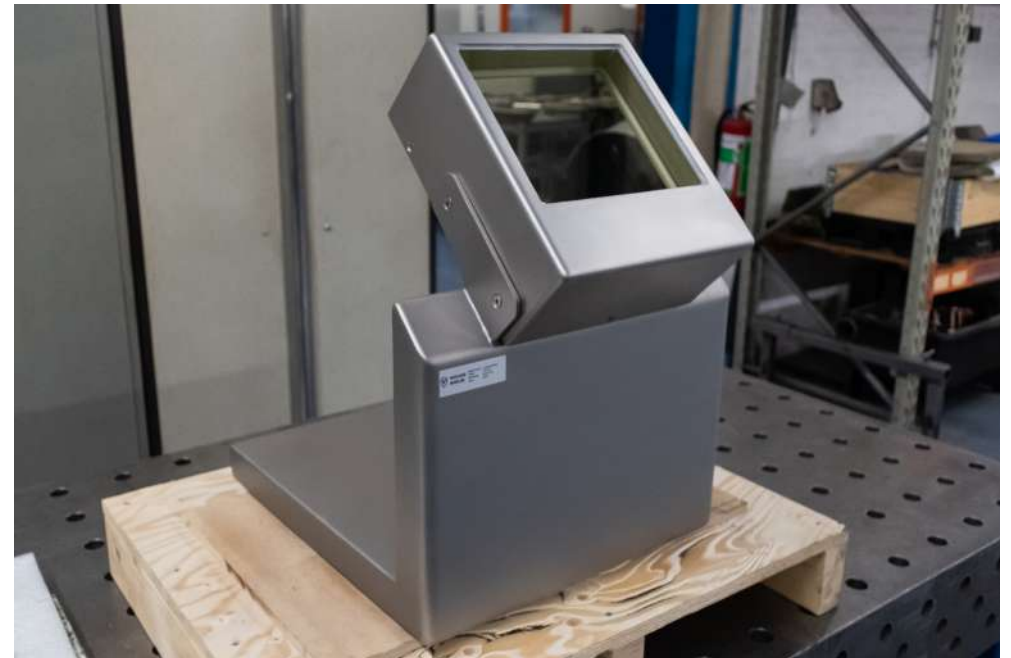


# L-BLOCK SHIELD

## Specifications

Finishing material	Stainless steel
Shielding material	Lead / lead glass
Shielding thickness	12.5 / 20 / 30 / 50 mm
Outside dimensions	Depending on configuration
Viewing window	Depending on configuration
Weight	Depending on configuration

Article code	Shielding	Outside dimensions (w x d x h)	Weight
<b>TTS111</b>	12.5 mm lead	422 x 505 x 850 mm	+/- 85 kg
<b>TTS112</b>	20 mm lead	422 x 505 x 580 mm	+/- 135 kg
<b>TTS113</b>	30 mm lead	426 x 516 x 605 mm	+/- 192 kg
<b>TTS115</b>	50 mm lead	425 x 465 x 585 mm	+/- 240 kg





**NUCLEAR  
SHIELDS**



# TABLETOP WORKSTATION

SW145

## Specifications

Finishing material	Stainless steel
Shielding material	Lead + Aluminium
Shielding thickness	5 mm + 10 mm
Outside dimensions	600 x 420 x 420 mm (w x d x h)
Inside dimensions	575 x 375 x 390 mm (w x d x h)
Weight	60 Kg



SW148

## Specifications

Finishing material	Stainless steel
Shielding material	Lead + Aluminium
Shielding thickness	8 mm + 10 mm
Outside dimensions	636 x 434 x 493 mm (w x d x h)
Inside dimensions	564 x 362 x 293 mm (w x d x h)
Weight	133 Kg





**NUCLEAR  
SHIELDS**



# PET QUALITY CONTROL WORKSTATION

SW125 / SW125-W

## Specifications

Finishing material	Stainless steel
Shielding material	Lead / lead glass
Shielding thickness	50 mm
Outside dimensions	1350 x 650 x 1420 mm (w x d x h)
Inside dimensions	890 x 540 x 250 mm (w x d x h)
Weight	1150 Kg

## Features

- Ideal for PET quality control
- Integrated dose calibrator shielding
- Optimal waste bin





**NUCLEAR  
SHIELDS**





# SPECT QUALITY CONTROL WORKSTATION

SW1205

## Specifications

Finishing material	Stainless steel
Shielding material	Lead / lead glass
Shielding thickness	5 mm
Outside dimensions	1008 x 658 x 1167 mm
Inside dimensions	958 x 608 x 256 mm
Weight	318 kg

## Features

- Integrated dose calibrator shielding
- Optimal waste bin



# CYCLOTRON L-BLOCK STATION

SW135



## Specifications

Finishing material	Coated steel
Shielding material	Lead / lead glass
Shielding thickness	50 mm
Outside dimensions	1100 x 600 x 1460 mm (w x d x h)
Inside dimensions	990 x 490 x 250 mm (w x d x h)
Weight	1650 Kg

## Features

- Ideal for cyclotron maintenance
- Integrated shielded safe (50 mm lead)
- Clean design for easy decontamination
- Lead glass viewing window for visibility during operations



# MOBILE PET WORKSTATION

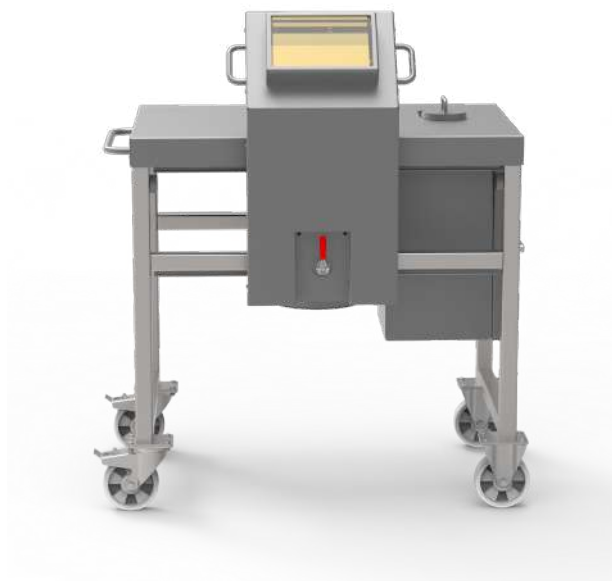
SW115

## Specifications

Finishing material	Stainless steel
Shielding material	Lead / lead glass
Shielding thickness	50 mm
Outside dimensions	1238 x 846 x 1408 mm (w x d x h)
Inside dimensions	Waste bin enclosure: 246 x 250 x 396 mm Dose calibrator well: 174 x 174 x 472 mm
Viewing window	270 x 170 x 110 mm (w x h x d)

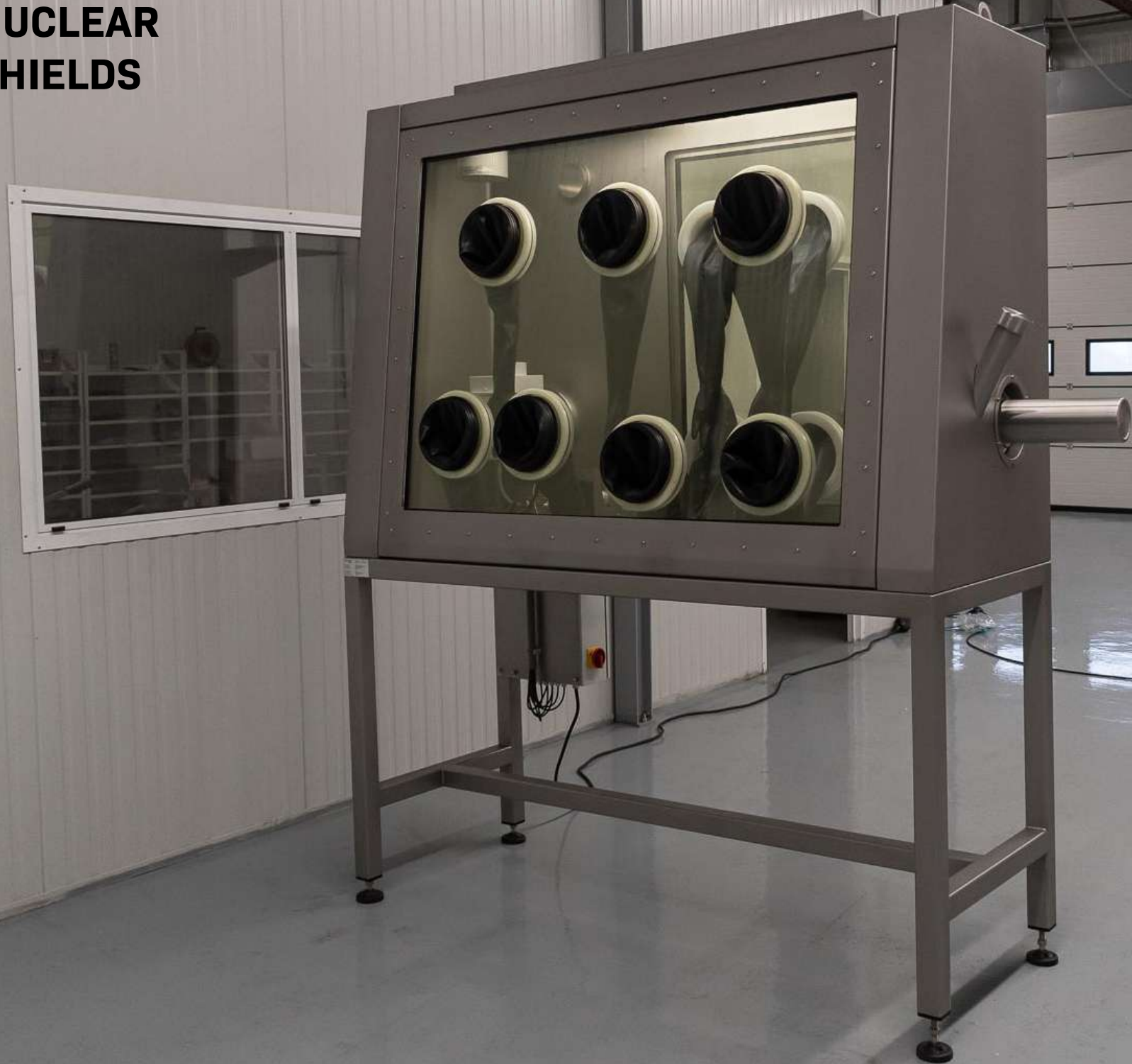
## Features

- Portable workstation
- Sliding lead glass viewing window
- Ideal for small PET hotlabs
- Integrated dose calibrator well and waste bin enclosure
- Left-to-right workflow concept





**NUCLEAR  
SHIELDS**



# SHIELDED NUCLEAR GLOVEBOXES

SGB115

## Specifications

Finishing material	Stainless steel
Shielding material	Lead / lead glass
Shielding thickness	According to customer requirements
Outside dimensions	According to customer requirements
Inside dimensions	According to customer requirements

## Features

- Ideal for handling radioactive materials
- Large lead glass viewing window possible
- Completely manufactured to end-user requirements
- Integration of external equipment possible



**CONSTRUCTION**

Page 81	Adhesive lead sheets rolls	RSW11X
Page 83	Adhesive lead parts	LP-ADHESIVE
Page 85	Lead glass	LG100 - LG200
Page 86	Lead wool blankets	LBN11
Page 88	Lead bricks	LB1





**NUCLEAR  
SHIELDS**





# ADHESIVE LEAD SHEET ROLLS

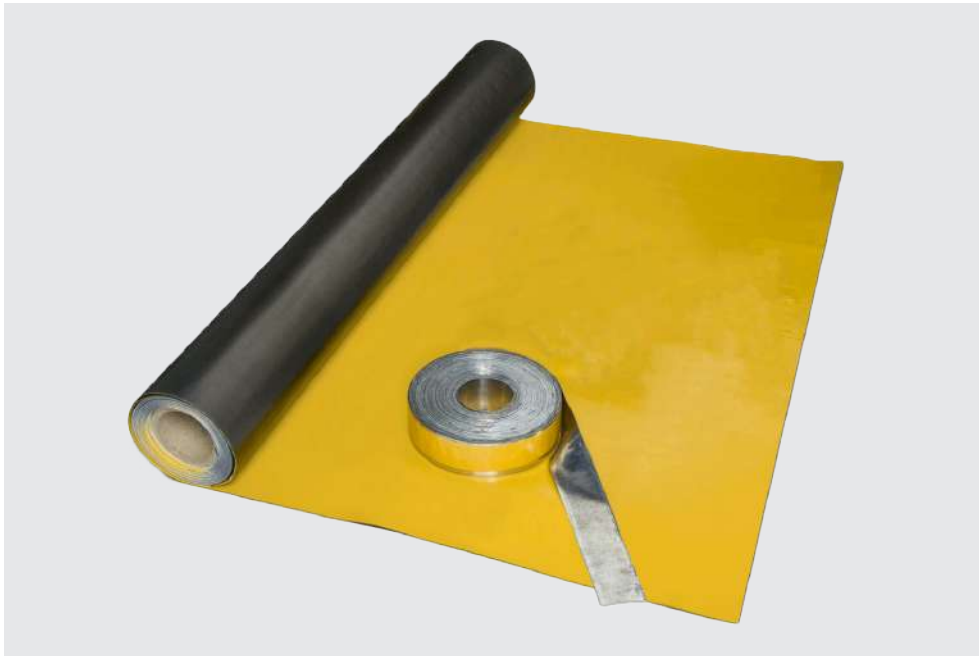
RSW11X

## Specifications

Finishing material	Coated lead
Shielding material	Lead
Shielding thickness	0.5 / 1 / 1.5 / 2 mm
Dimensions	See website page for sizing information.

## Features

- Optimized for easy application of lead lining
- Available in various lead thicknesses and sizes
- **Can be made according to your drawings for adhesive shielding parts!**



For all your shielding projects.

Radiation shielding | Construction 81/89



**NUCLEAR  
SHIELDS**



# ADHESIVE LEAD PARTS

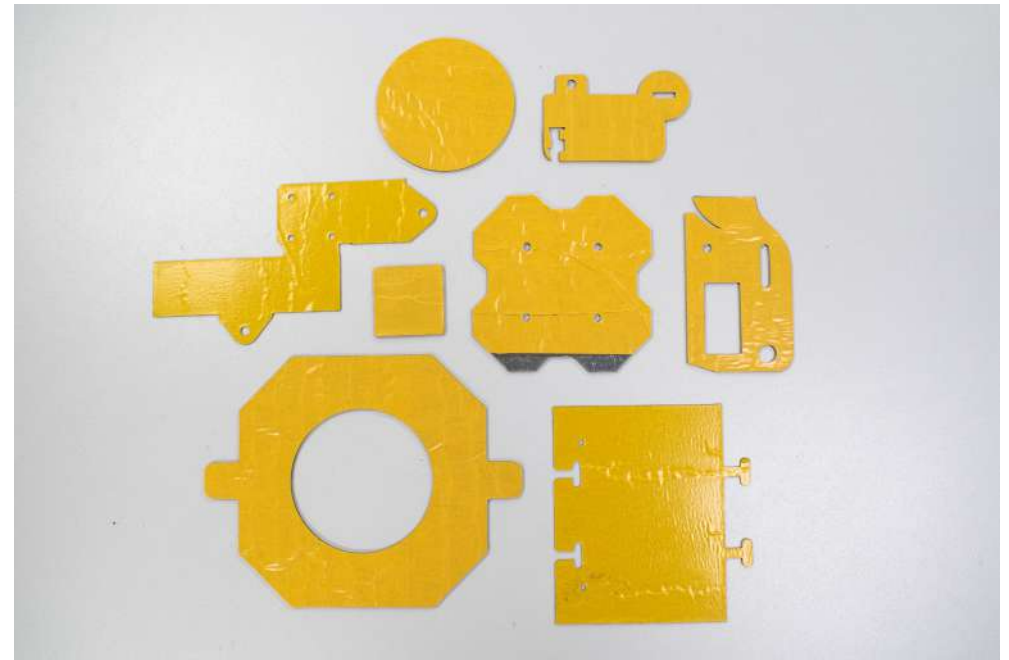
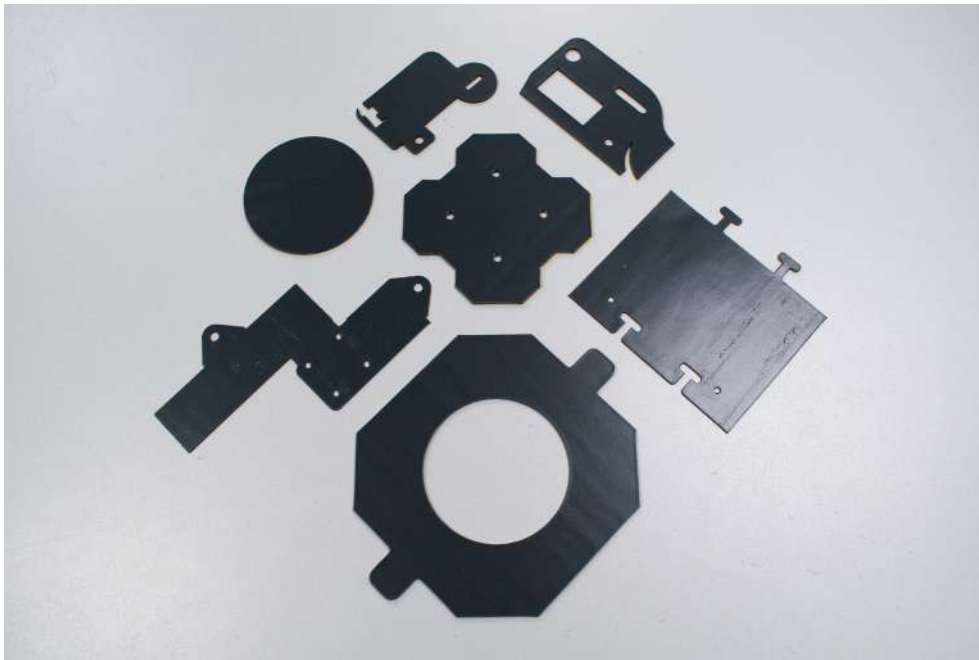
## LP-ADHESIVE

### Specifications

Finishing material	Coated lead RAL 7016
Shielding material	Lead
Shielding thickness	0.5 / 1 / 1.5 / 2 mm
Dimensions	Shape according to your drawings or specifications

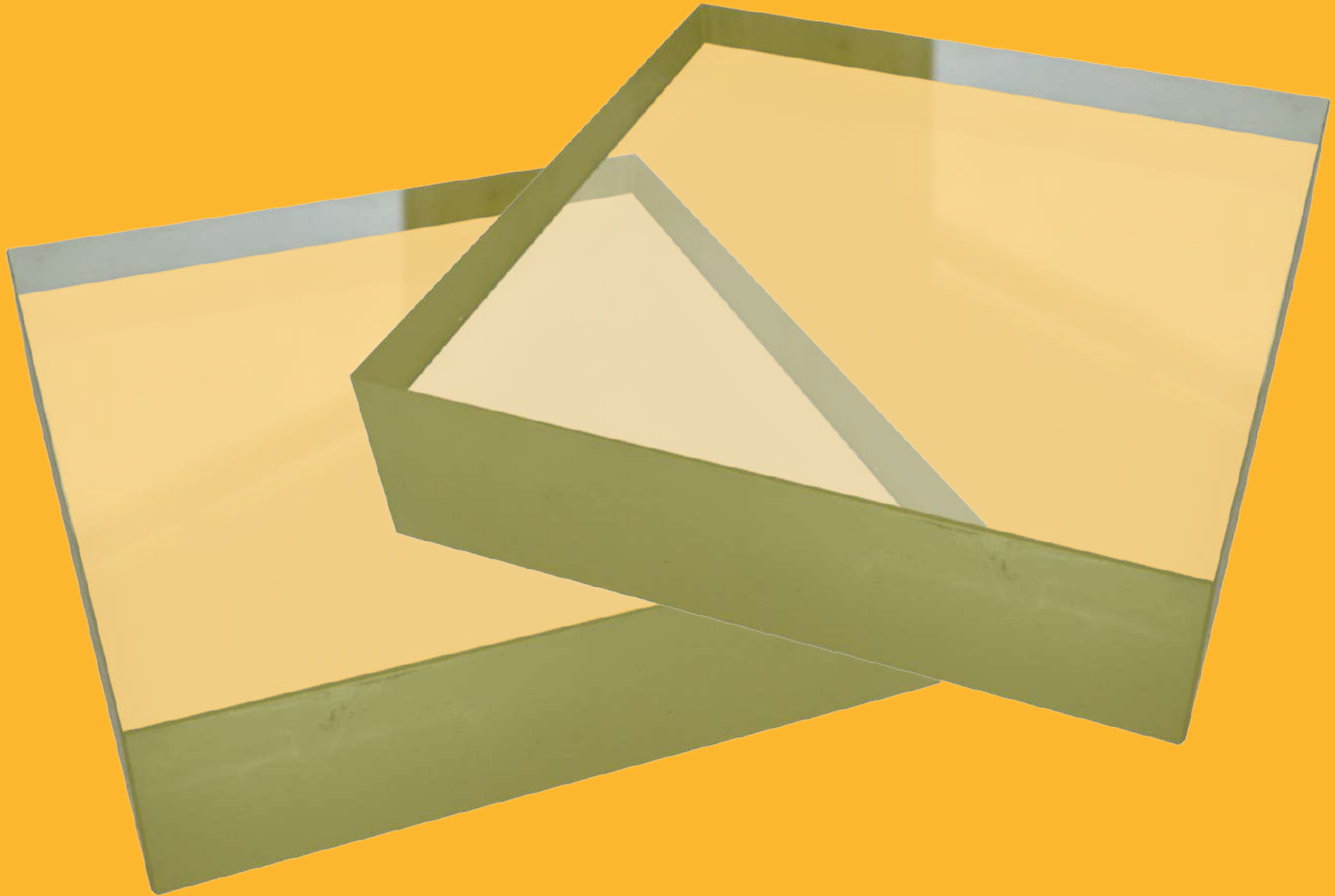
### Features

- **Custom made to your shape**
- Optimized for easy application of lead lining
- Available in various lead thicknesses





**NUCLEAR  
SHIELDS**



# LEAD GLASS

LG100 - LG200

## Specifications

Shielding material	Lead
Density	According to requests
Shielding thickness	According to requests
Outside dimensions	According to requests

## Features

- Can be customized to your requirements
  - Holes can be added to the lead glass
  - Rounded edges possible
  - Can be integrated into product or inside a frame
  - Square and tubular lead glass available
- [Send us your drawings for customized lead glass parts!](#)



# LEAD WOOL BLANKETS

LBN11

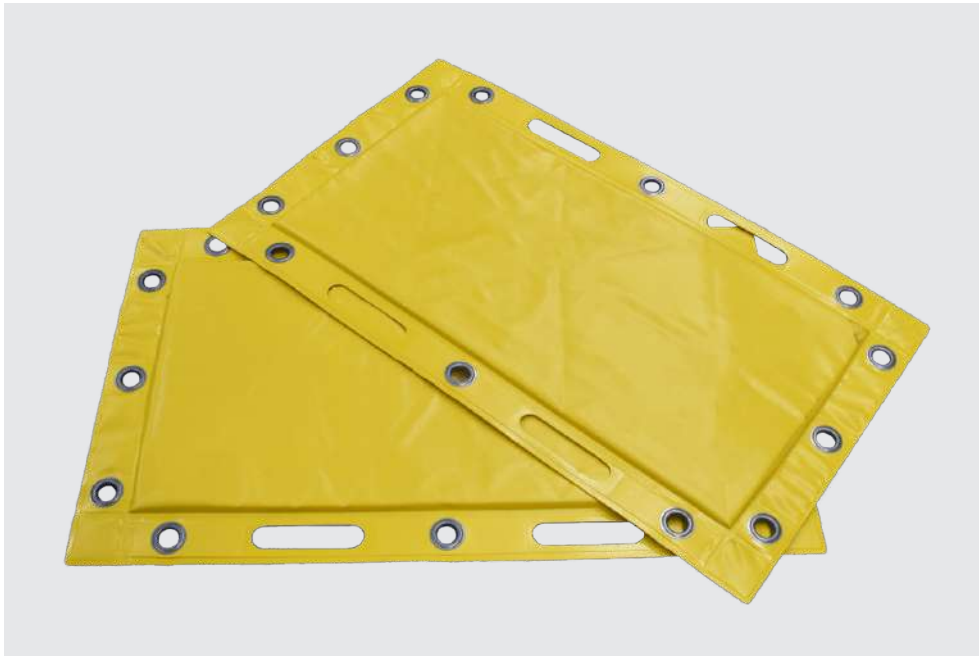
## Specifications

Finishing material	PVC laminated reinforced with nylon fibre
Shielding thickness	6 mm lead equivalence
Attenuation	35% minimum for Cobalt-60
Outside dimensions	950 x 550 mm
Shielding dimensions	800 x 400 mm
Weight	24 Kg
Grommets strength	120 Kg (12 units per blanket)
Fire class	M2

## Features

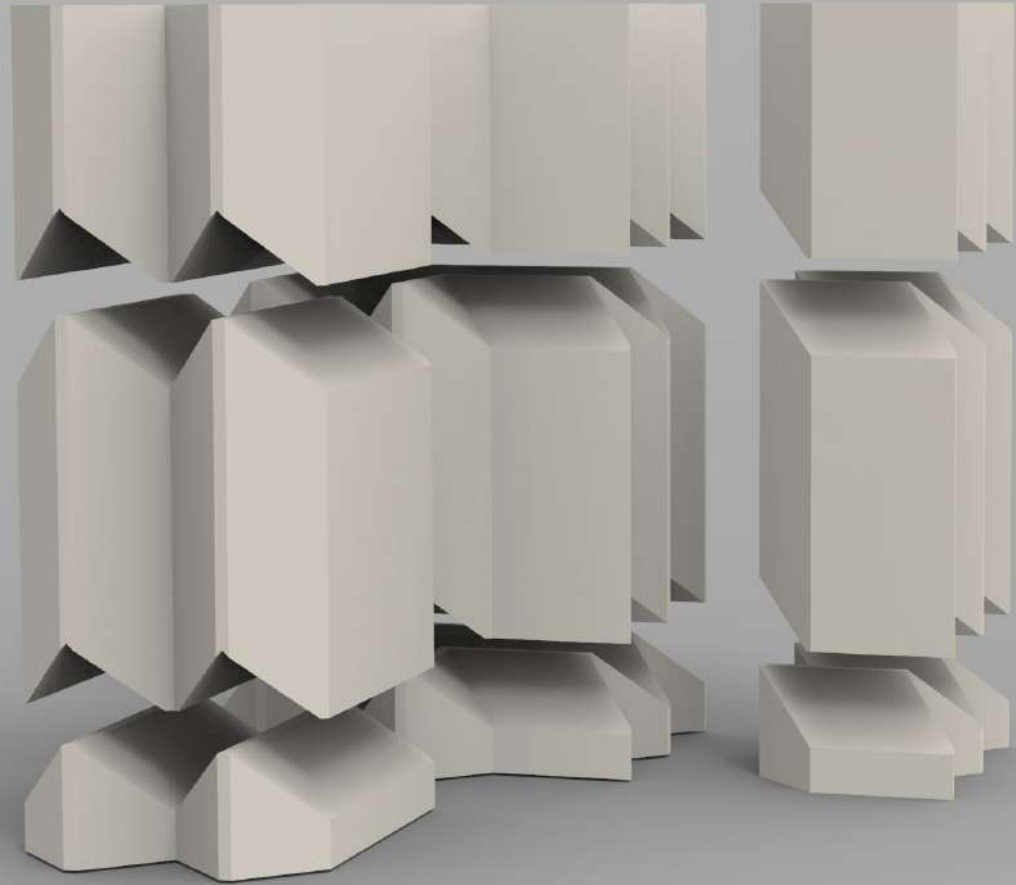
- Handles for ergonomic handling
- Highly durable shielding solution
- Can be used for many applications
- Storage containers and lifting beams also available

Available in custom dimensions, custom printing and multiple colors.  
Ask for more information!



For all your shielding projects.

Radiation shielding | Construction 86/89



# Lead Bricks

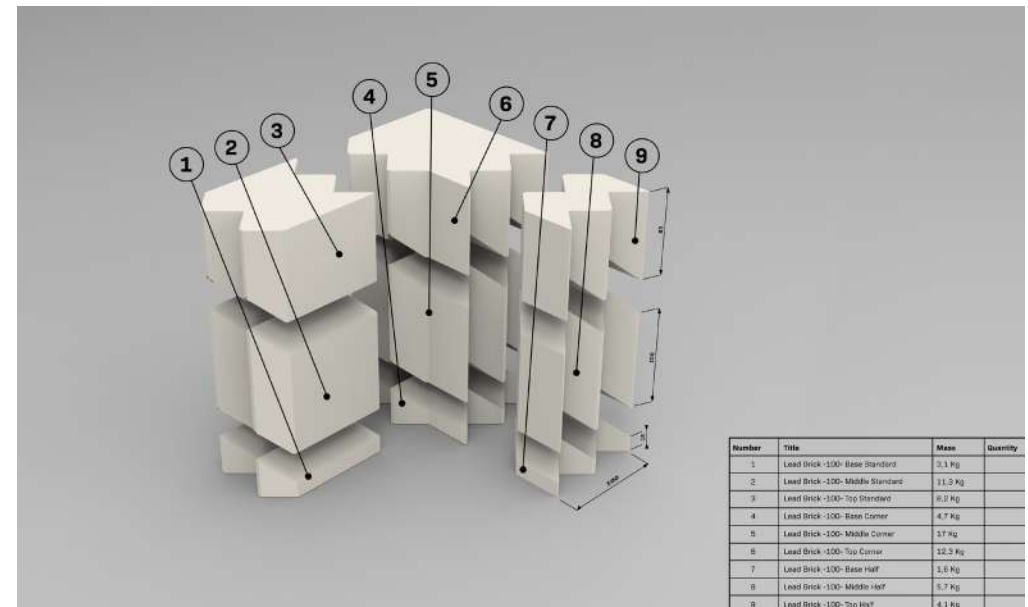
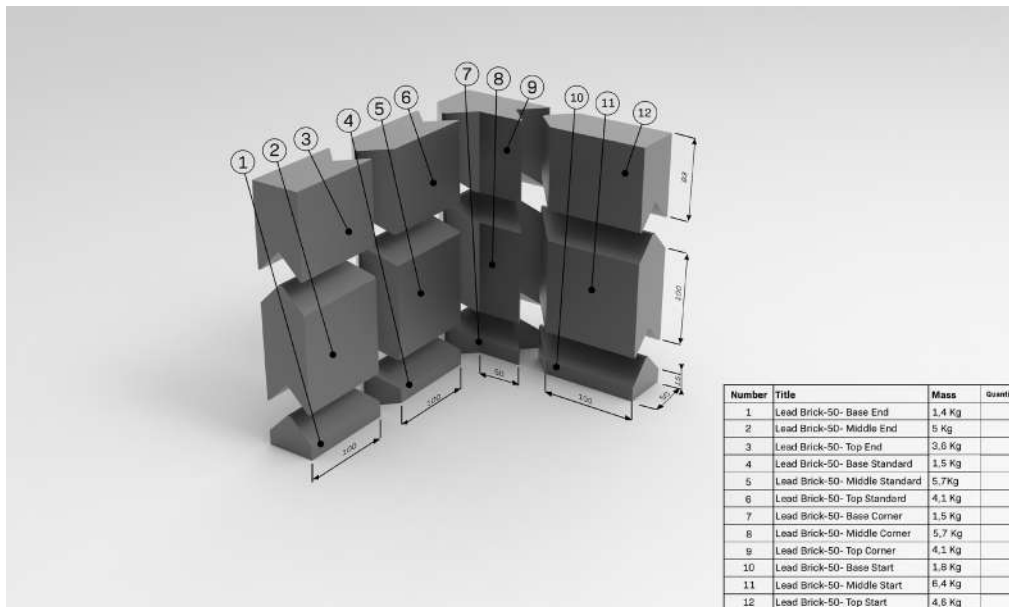
LB1

## Specifications

Finishing material      Raw / Coated  
 Shielding thickness      50 / 100 mm

## Features

- Interlocking design
- Prevents nuclear radiation leaks
- Easy installation
- Available in custom dimensions..
- Ask for more informations!







# NUCLEAR SHIELDS

## Nuclear Shields B.V.

Akkervoortweg 29  
5827AP, Vortum-Mullem  
The Netherlands

Tel. nr. +31 (0)485 561 140  
E-mail [Info@nuclear-shields.com](mailto:Info@nuclear-shields.com)  
Website [www.nuclear-shields.com](http://www.nuclear-shields.com)  
VAT NL857196881B01

### ABN AMRO Bank

IBAN NL94ABNA0246385561  
BIC ABNANL2A

### Chamber of Commerce Eindhoven

Reg. nr. 67846769

### Document: Nuclear Shields Catalog

Revision	Modified By	Modified On	Modifications
2020-01	Rens Korsten (RKO)	16-Jan-2020	First revision created
2021-04	Rens Korsten (RKO)	20-Apr-2021	Products added / updated
2022-02	Rens Korsten (RKO)	28-Jan-2022	Products added / updated
2022-10	Tim van der Krabben (TKR) Sem Verberk (SVE)	12-Okt-2022	Products added / updated

### Disclaimer

Nuclear Shields strives to provide the most up-to-date catalog possible. Should, despite these efforts, the information or the content in this catalog be incomplete and/or incorrect, we cannot accept liability for it.